



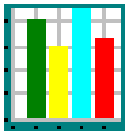
Pembrokeshire Inland Path Counters

Visitor Counters Report September-December 2010

Linetop Ltd, 16 Roseheyworth Business Park
Abertillery, Blaenau Gwent NP13 1SP
Tel: 01495 321569 Email: info@linetop.co.uk

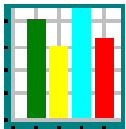
Summary

- This report presents path user data for Sept-Dec 2010 and the full year
- The autumn total for the inland paths excluding Llangwm was 5,631 compared to 5309 the year before, an increase of 6%
- The autumn weather was good for walking until extreme cold arrived



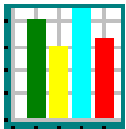
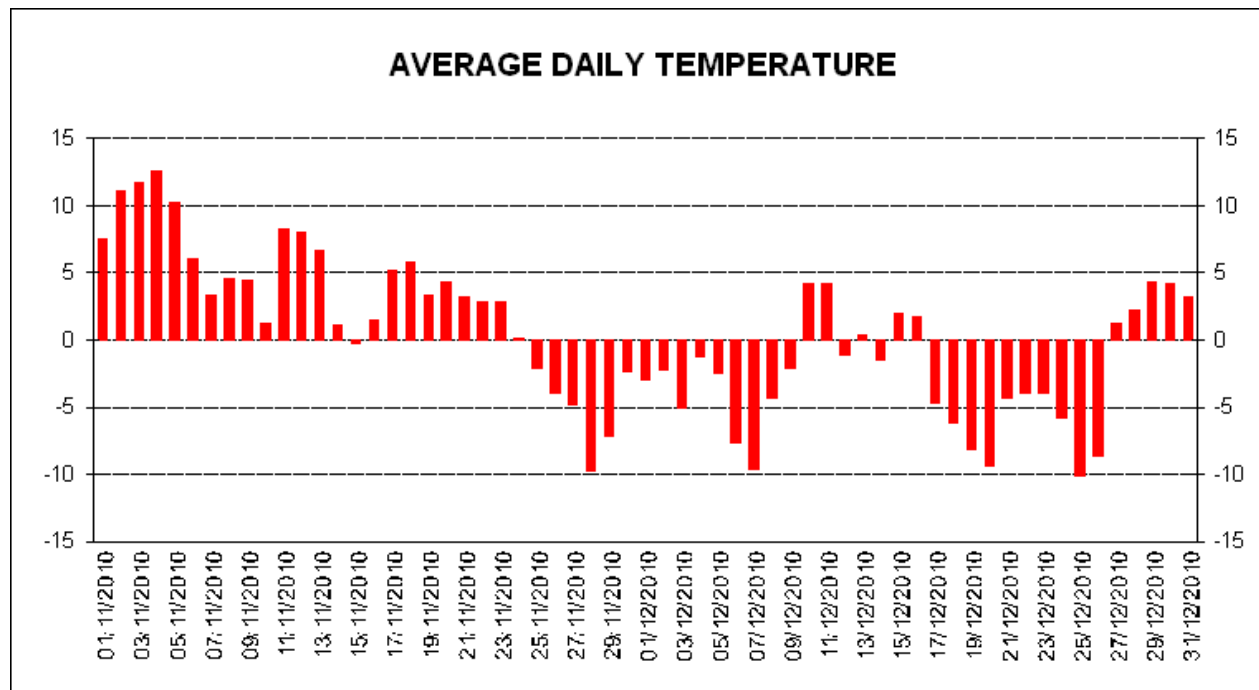
Site Codes and Equipment

SITE	SITECODE	DEVICE	DATES
St Davids gate 1	DAVIDS	Pyro	June-06 to Aug-09
St Davids gate 2	DAVIDS2	Pyro	Aug-09
Minwear footbridge	MINWEAR	Pyro	Jun-06
Nevern stile	NEVERN	Microslab	Jun-06
Newport stile	NEWPORT	Microslab	Jun-06 to Oct-08
Pandy footbridge	PANDY	Pyro	Jun-06
Roch Bridge footpath	ROCH	Lrg Slab	Jun-06
Walwyn's Castle stile	WALWYN	Microslab	Jun-06 to Feb-10
Garn Fechan path	GARNF	Slab	Oct-08
Llangwm gate	LLANGWM	Slab	Jun-10



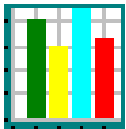
Technical Review

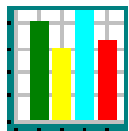
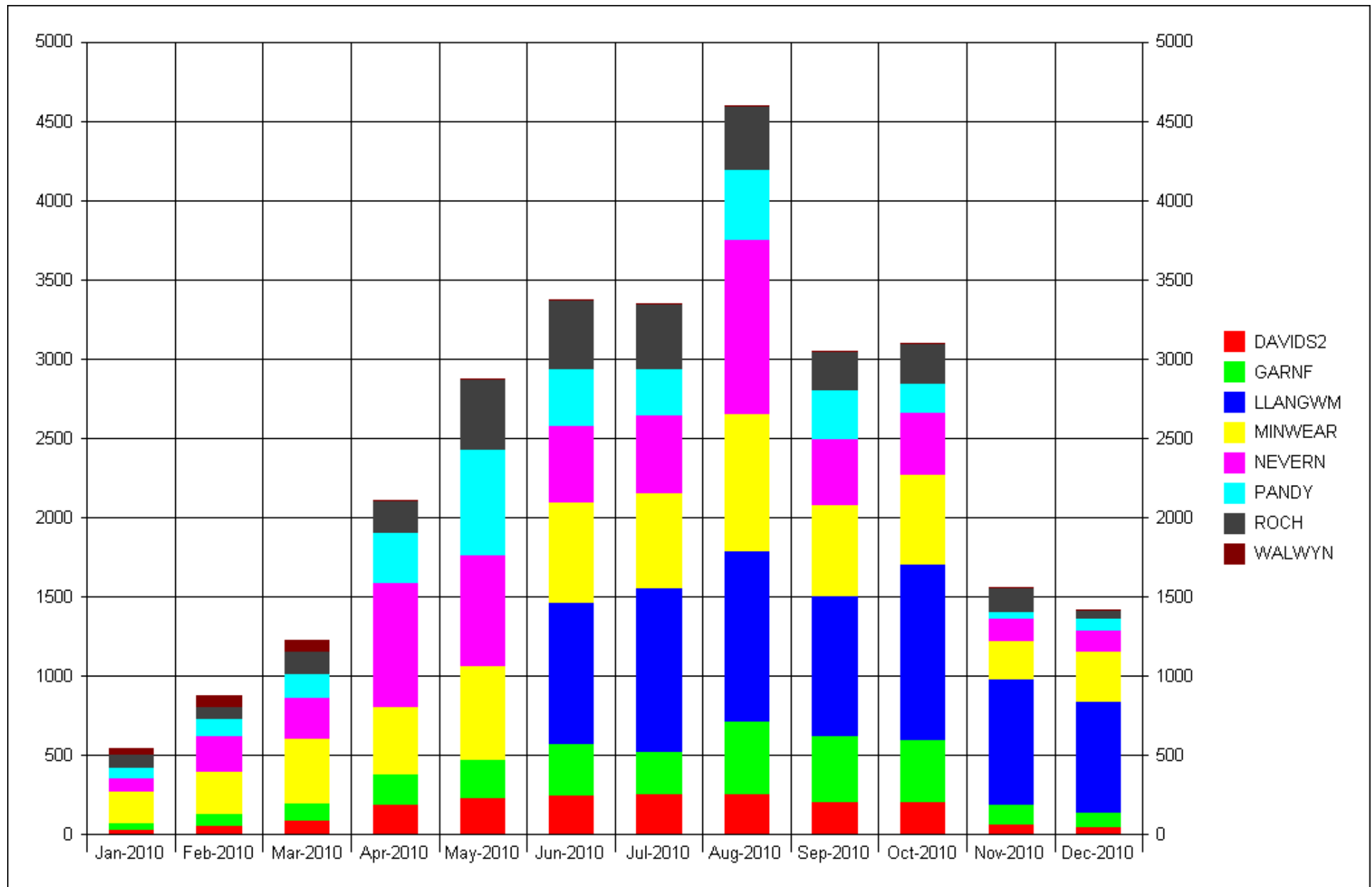
- All the counters are working normally
- It was extremely cold from late November persisting to late December



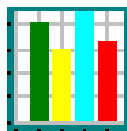
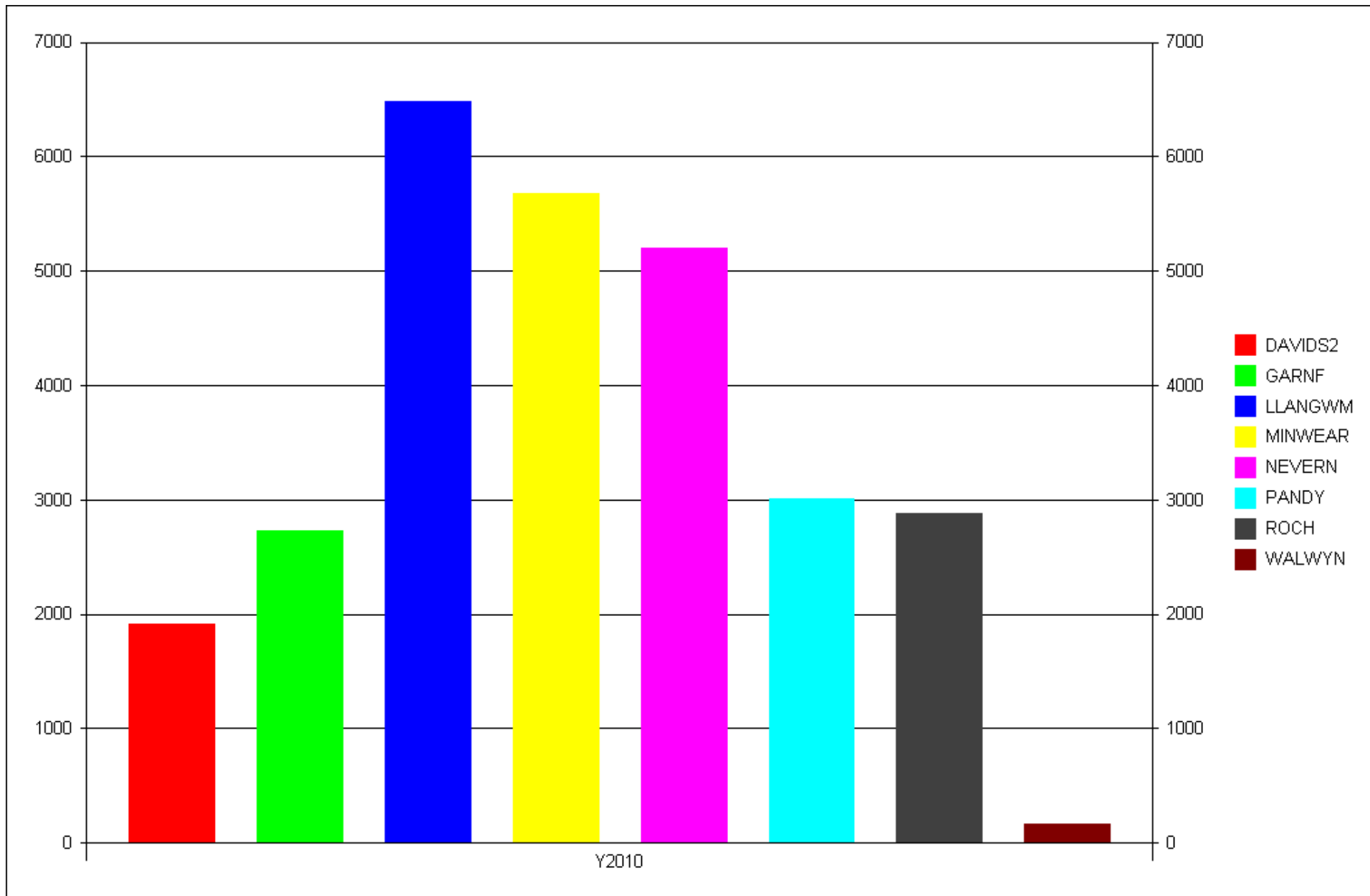
Recent Monthly Totals

	Sep-10	Oct-10	Nov-10	Dec-10
DAVIDS2	206	209	67	54
GARNF	417	391	121	88
LLANGWM	881	1111	797	701
MINWEAR	578	563	240	312
NEVERN	413	395	139	135
PANDY	311	181	46	78
ROCH	243	245	149	50
TOTAL	3049	3095	1559	1418



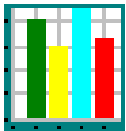
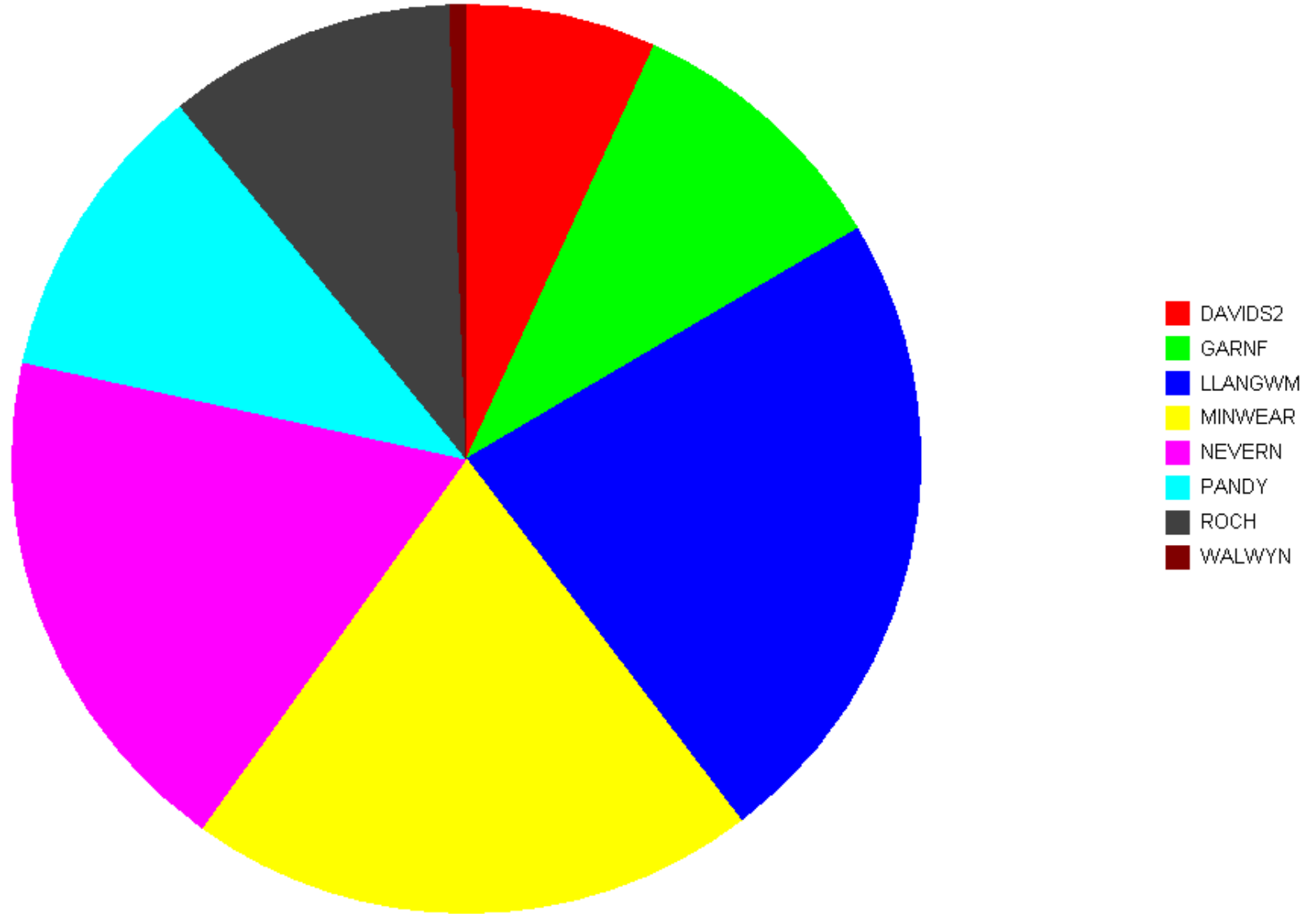


MONTHLY TOTALS BY SITE FOR YEAR 2010

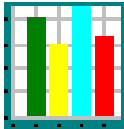
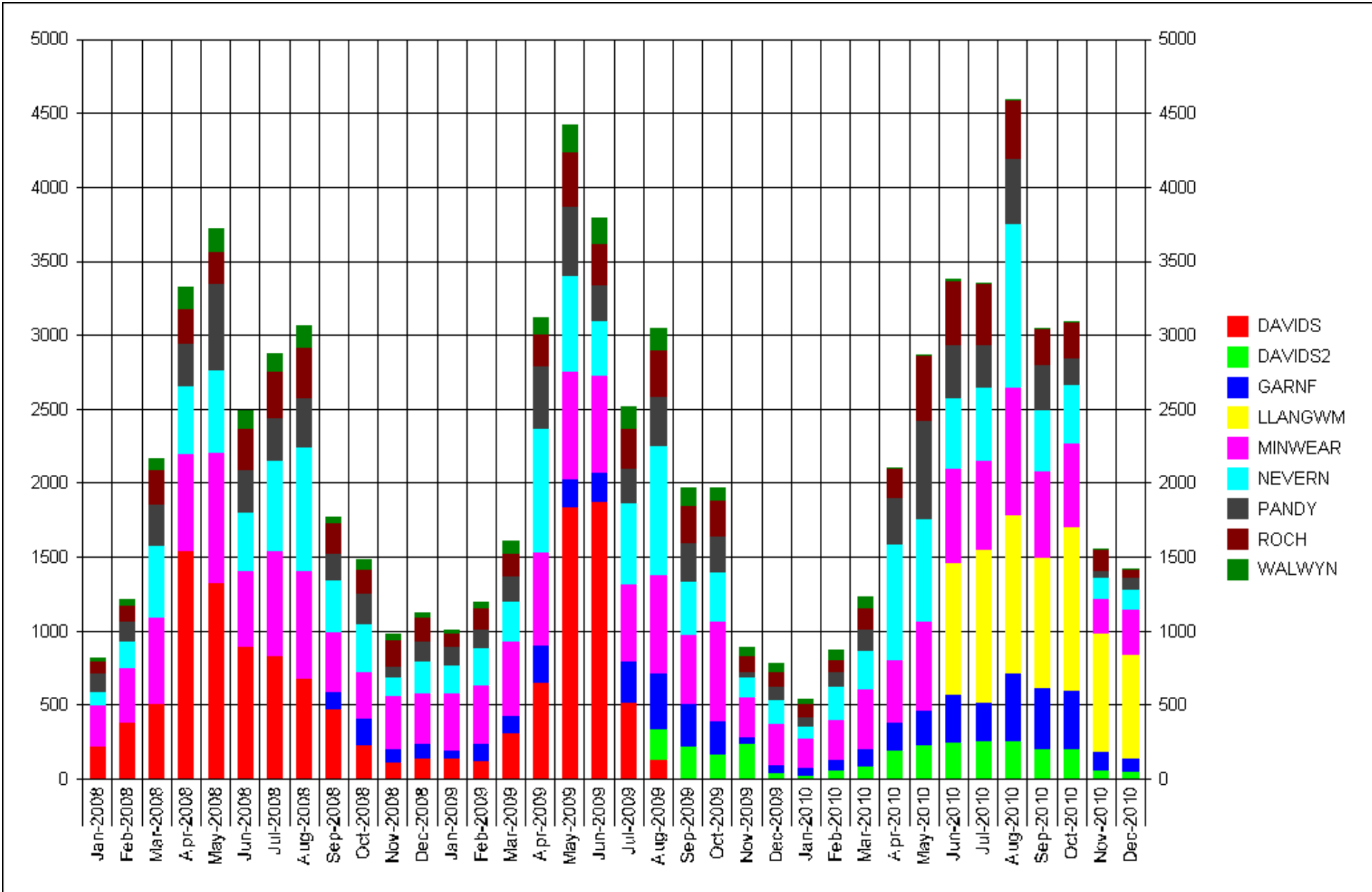


TOTALS BY SITE FOR YEAR 2010
 (N.B. Llangwlm/Walwyn are partial years)

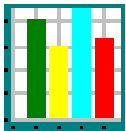
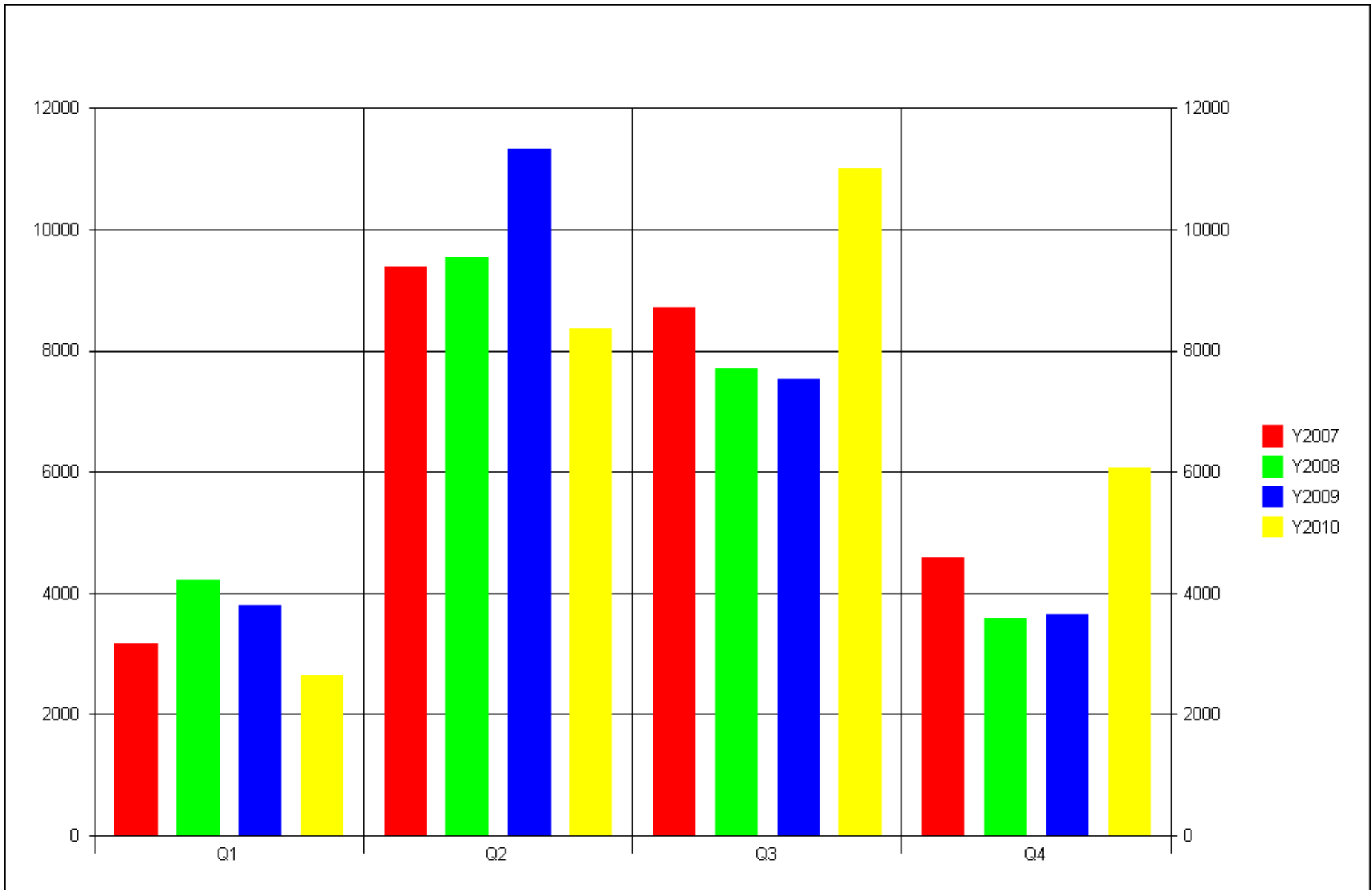
Y2010



TOTALS BY SITE FOR YEAR 2010
(N.B. Llangwm/Walwyn are partial years – same logger)



MONTHLY TOTALS HISTORY (DAVIDS MOVED TO DAVIDS2)

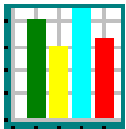


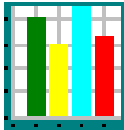
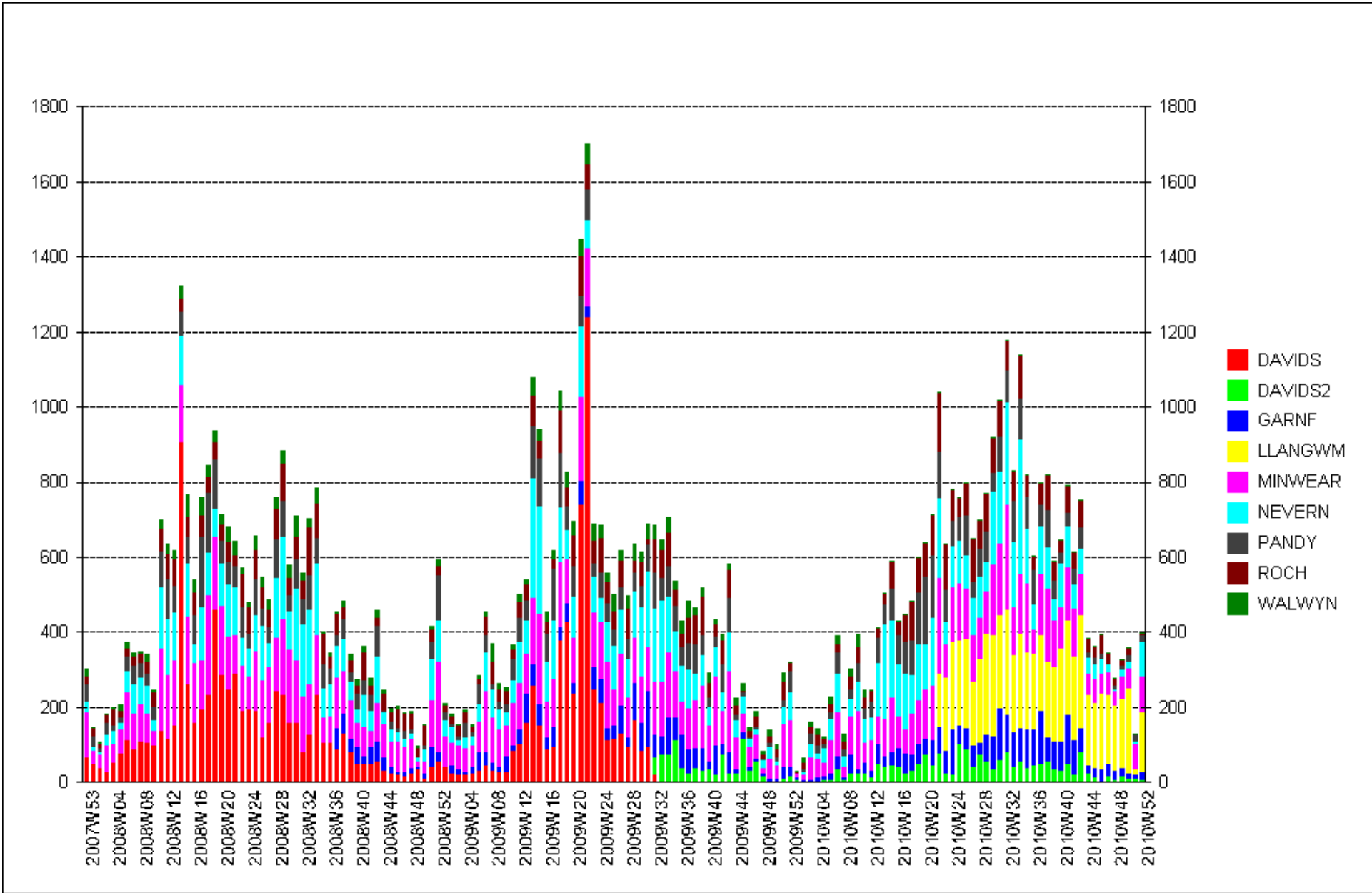
QUARTERLY TRENDS FOR ALL INLAND SITES
 The sites monitored has varied from year to year

Quarterly and Annual Trends

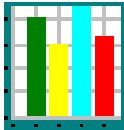
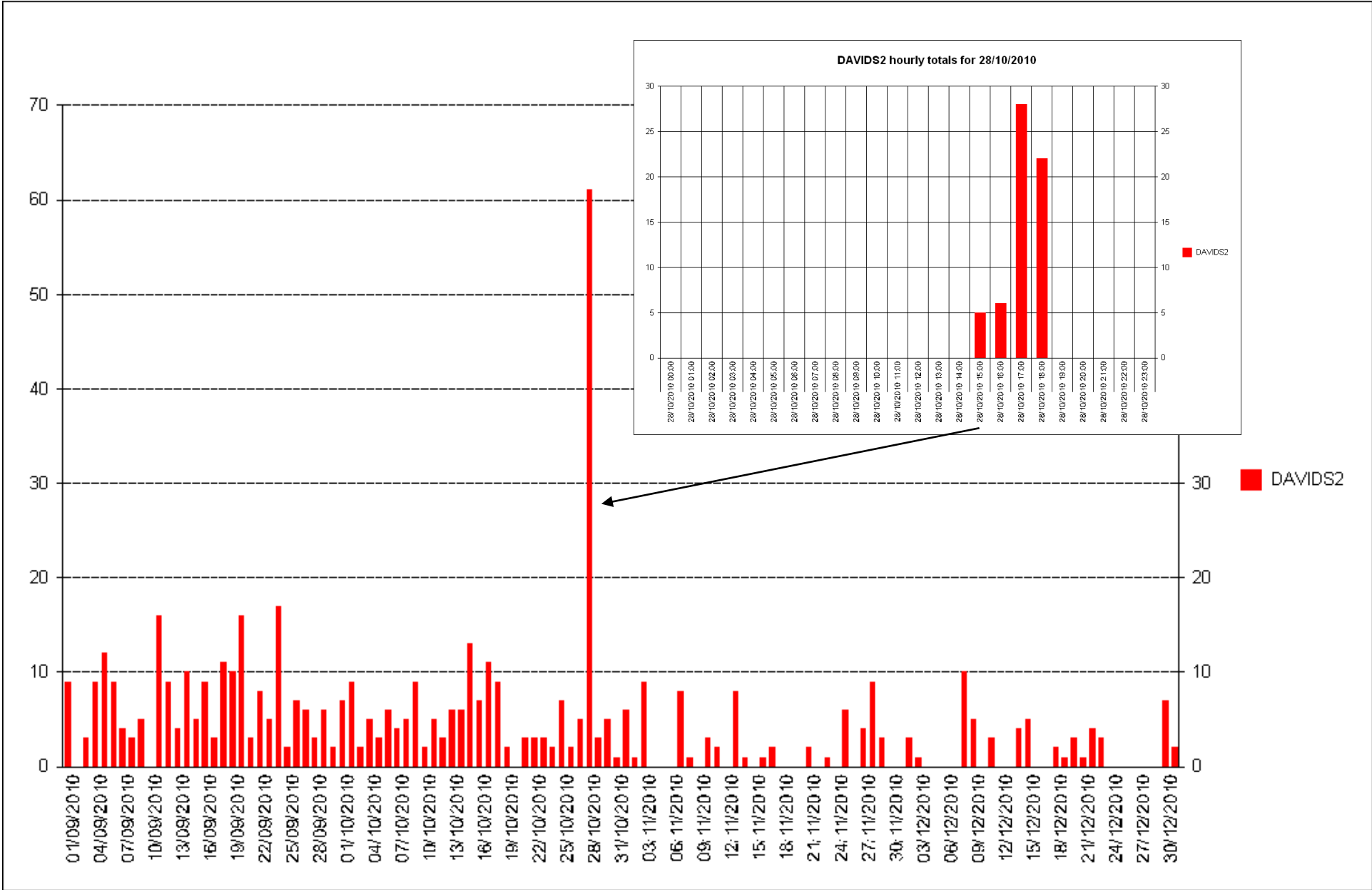
	Y2007	Y2008	Y2009	Y2010
Q1	3166	4209	3809	2643
Q2	9380	9541	11330	8353
Q3	8711	7708	7543	10996
Q4	4588	3580	3644	6072
TOTAL	25845	25038	26326	28064

N.B. Locations monitored have varied from year to year



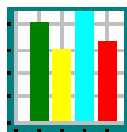
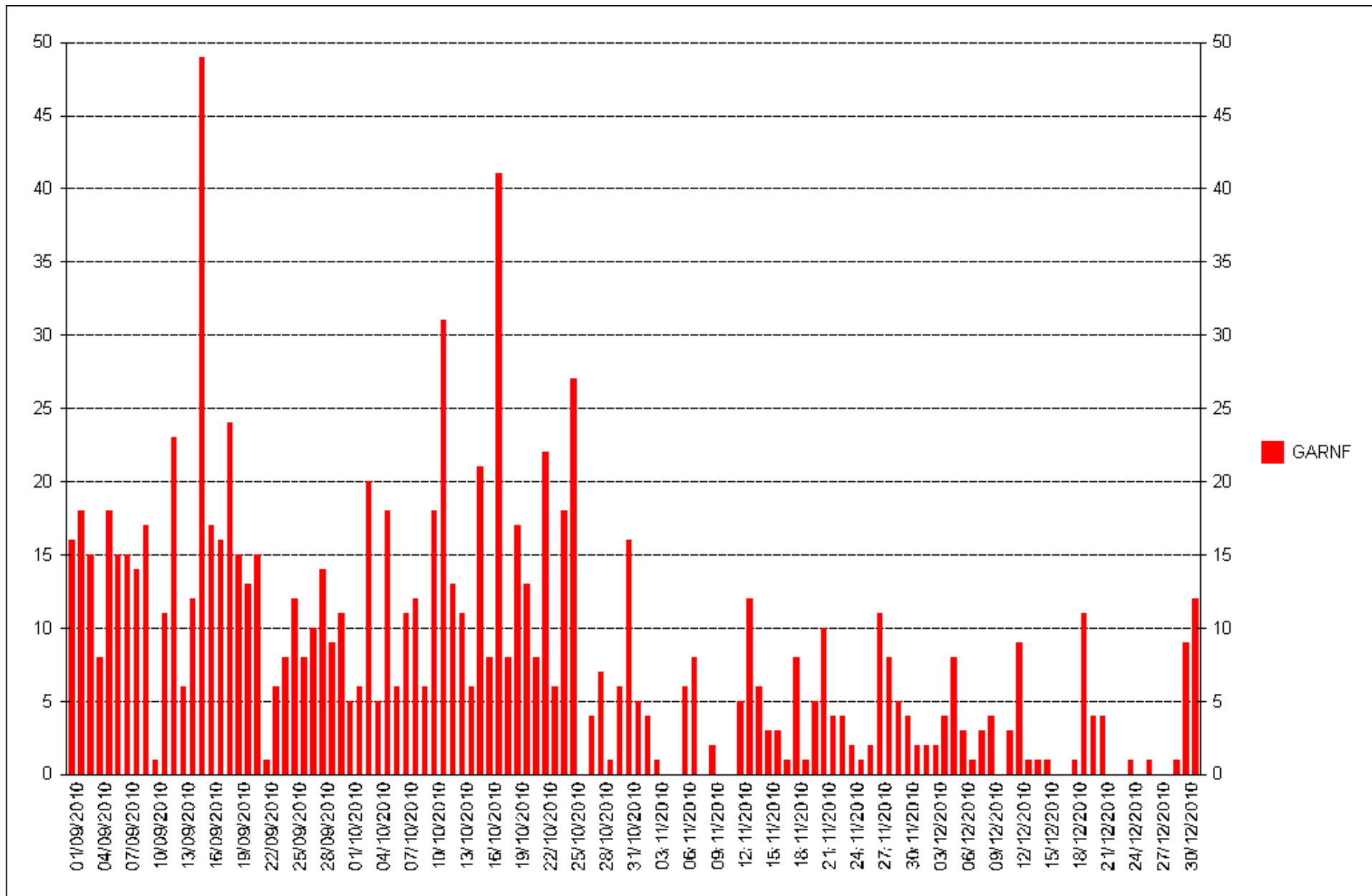


WEEKLY TOTALS 2008 - 2010

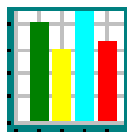
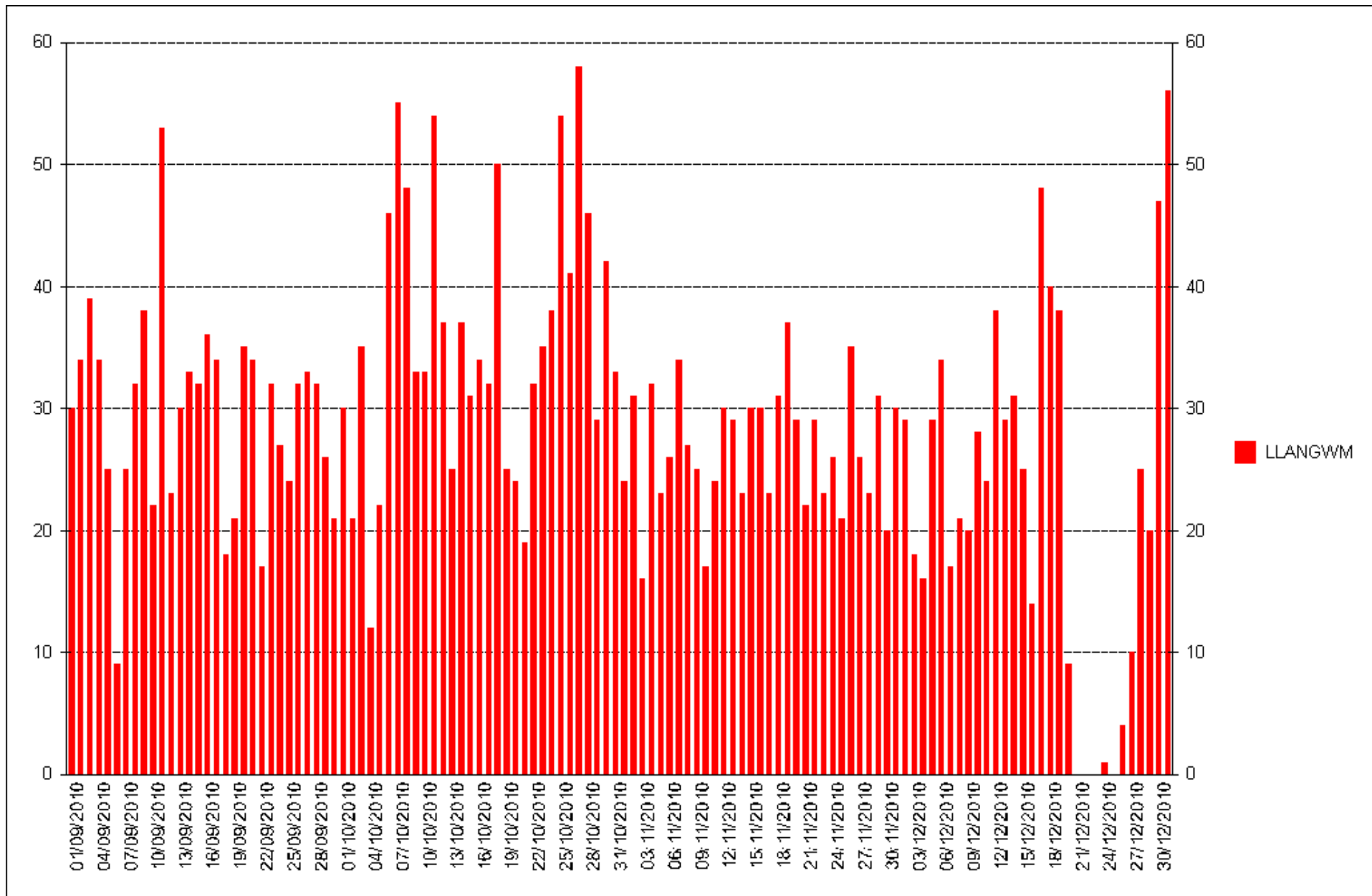


ST DAVIDS No. 2 LOCATION

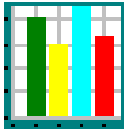
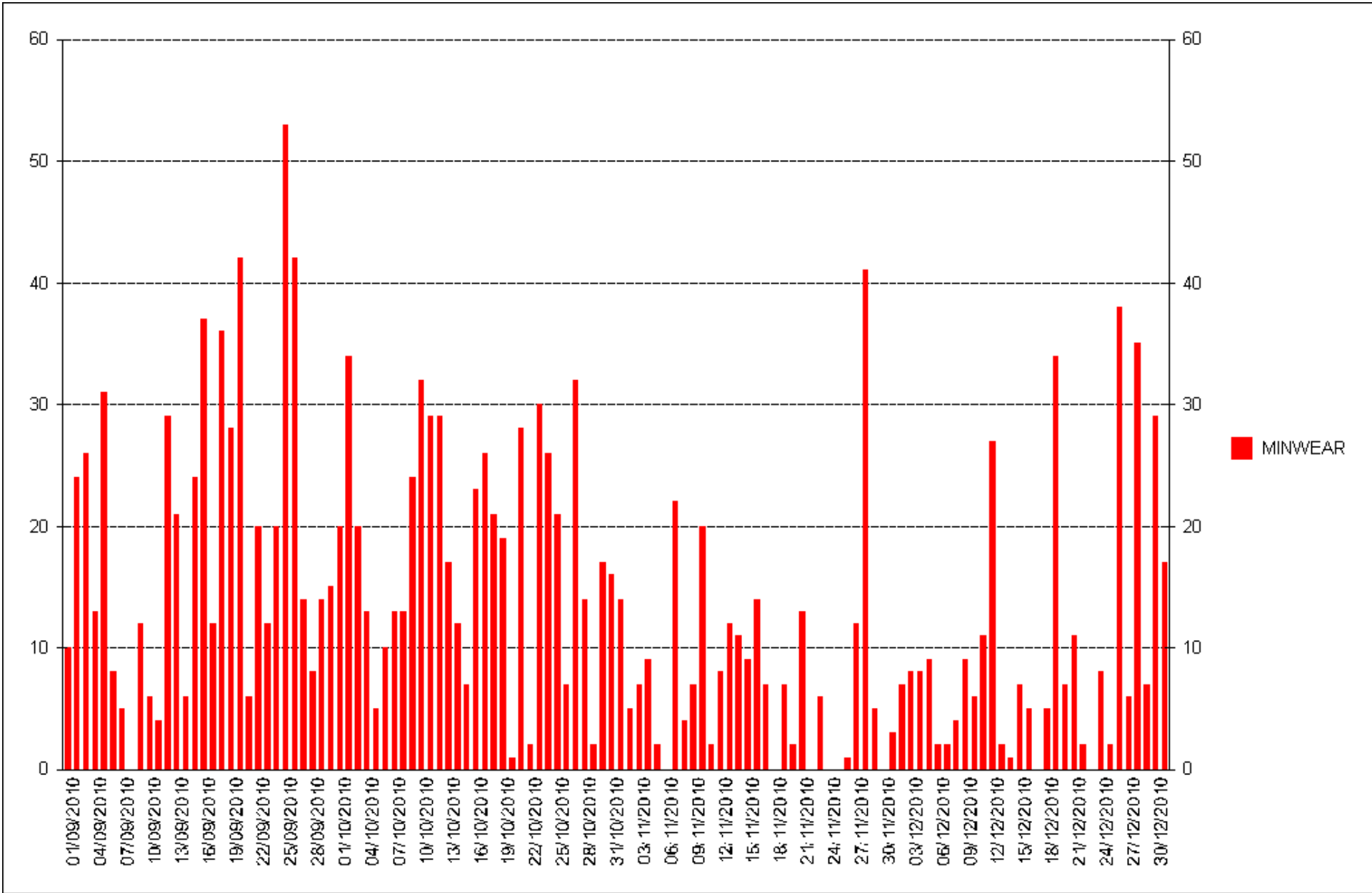
The result for Thurs 28 October although atypical looks valid



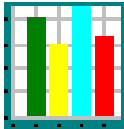
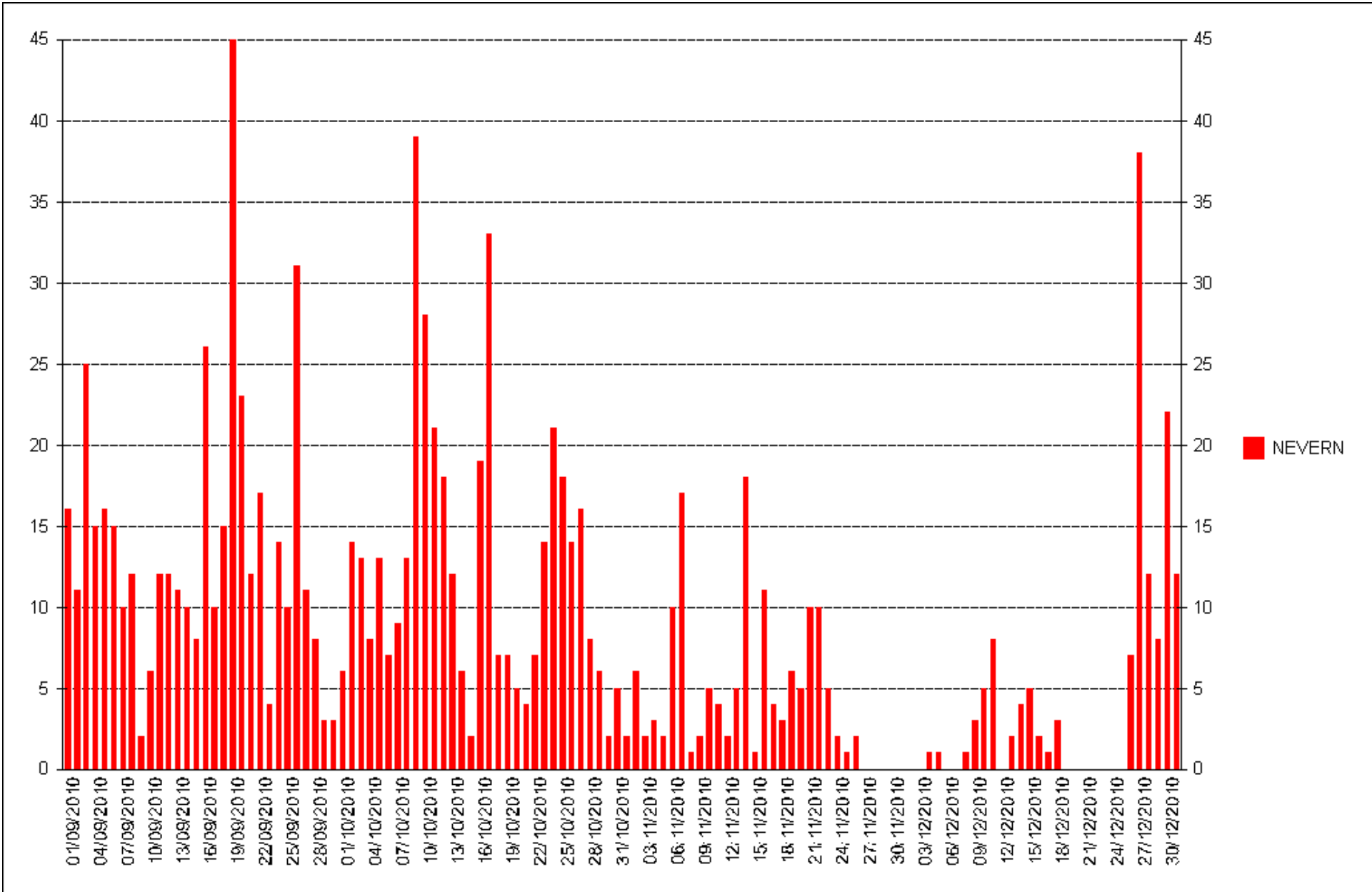
GARN FECHAN



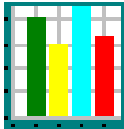
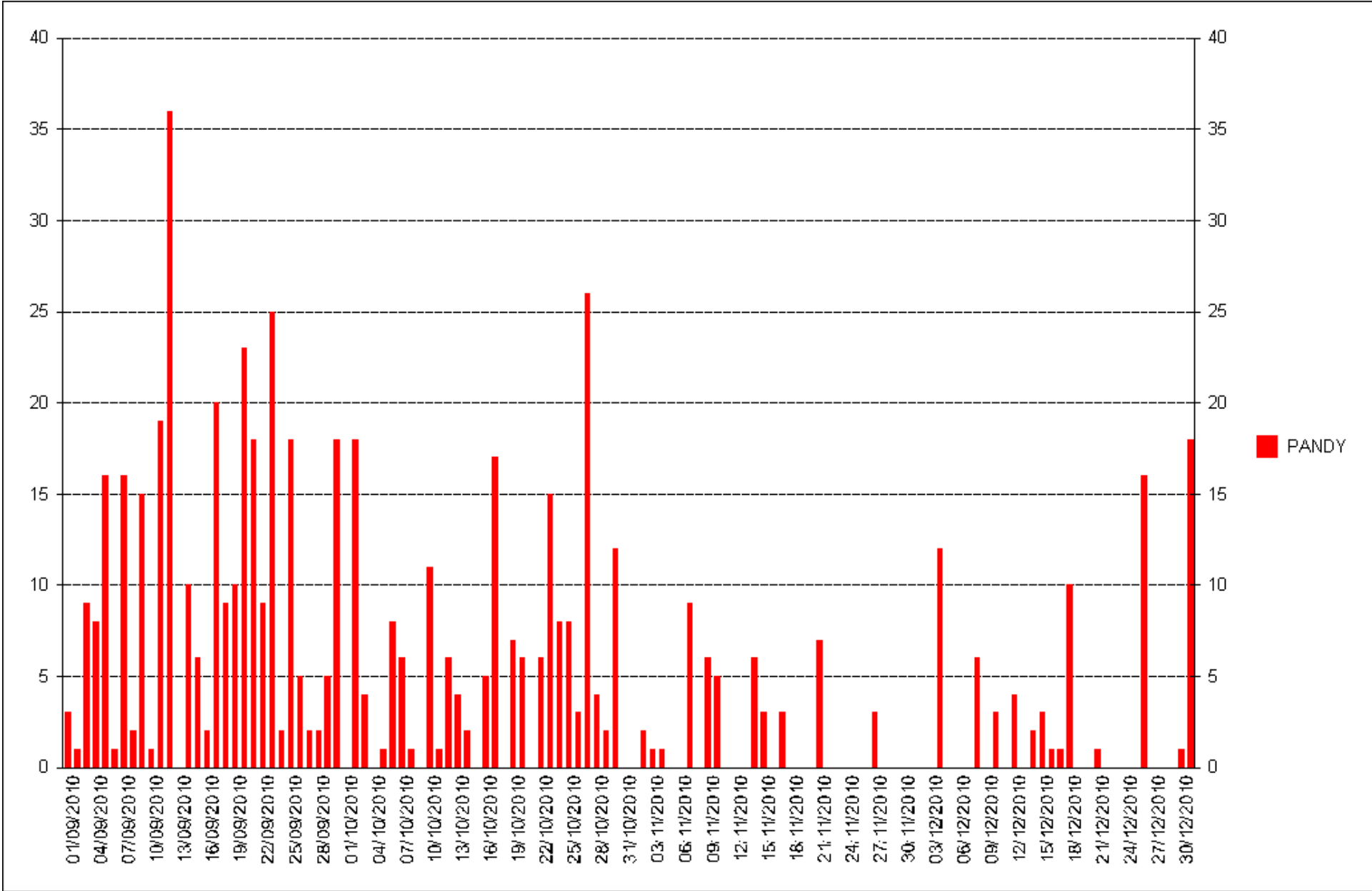
LLANGWM



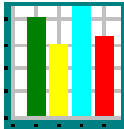
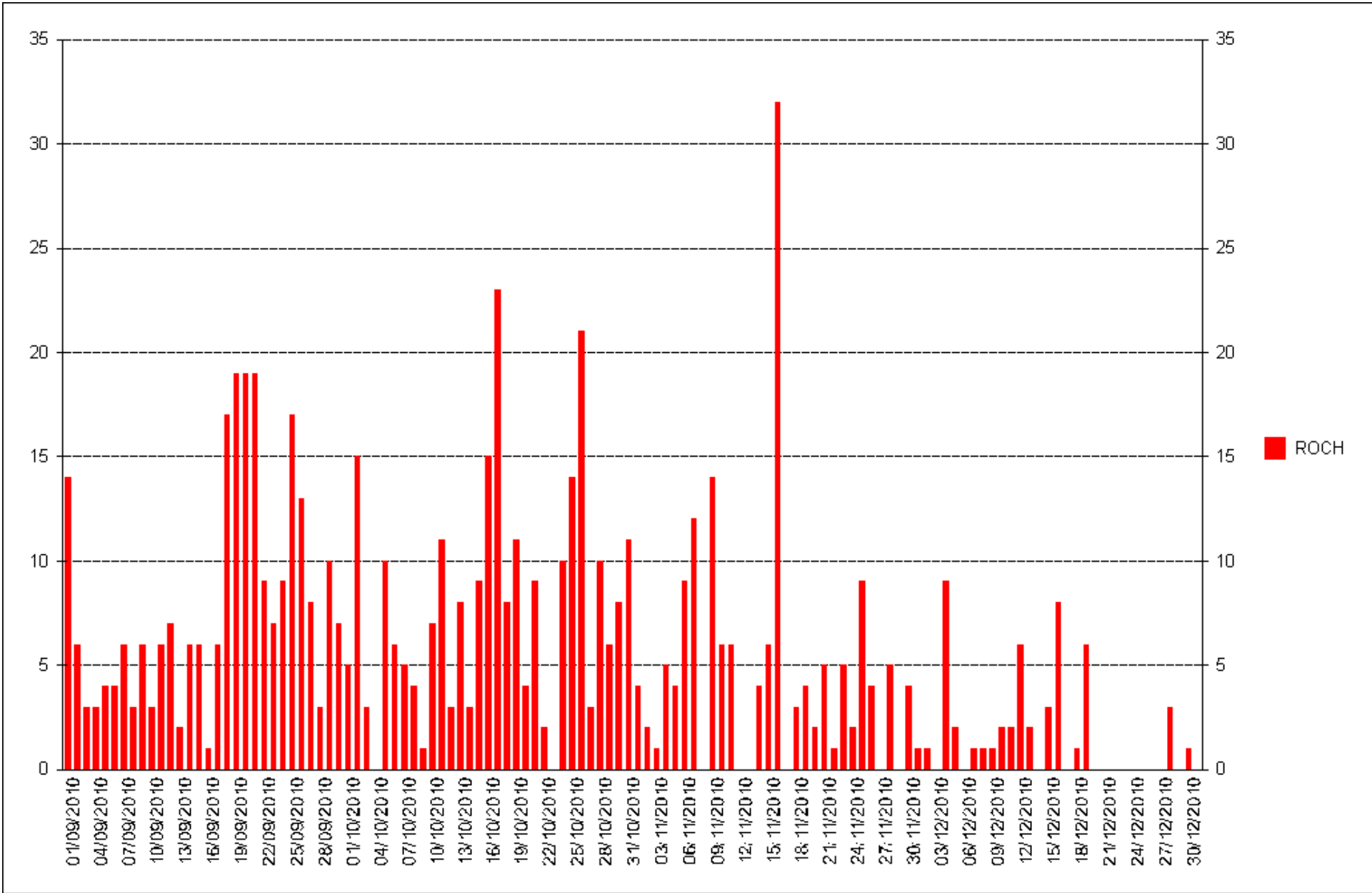
MINWEAR



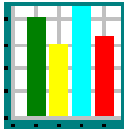
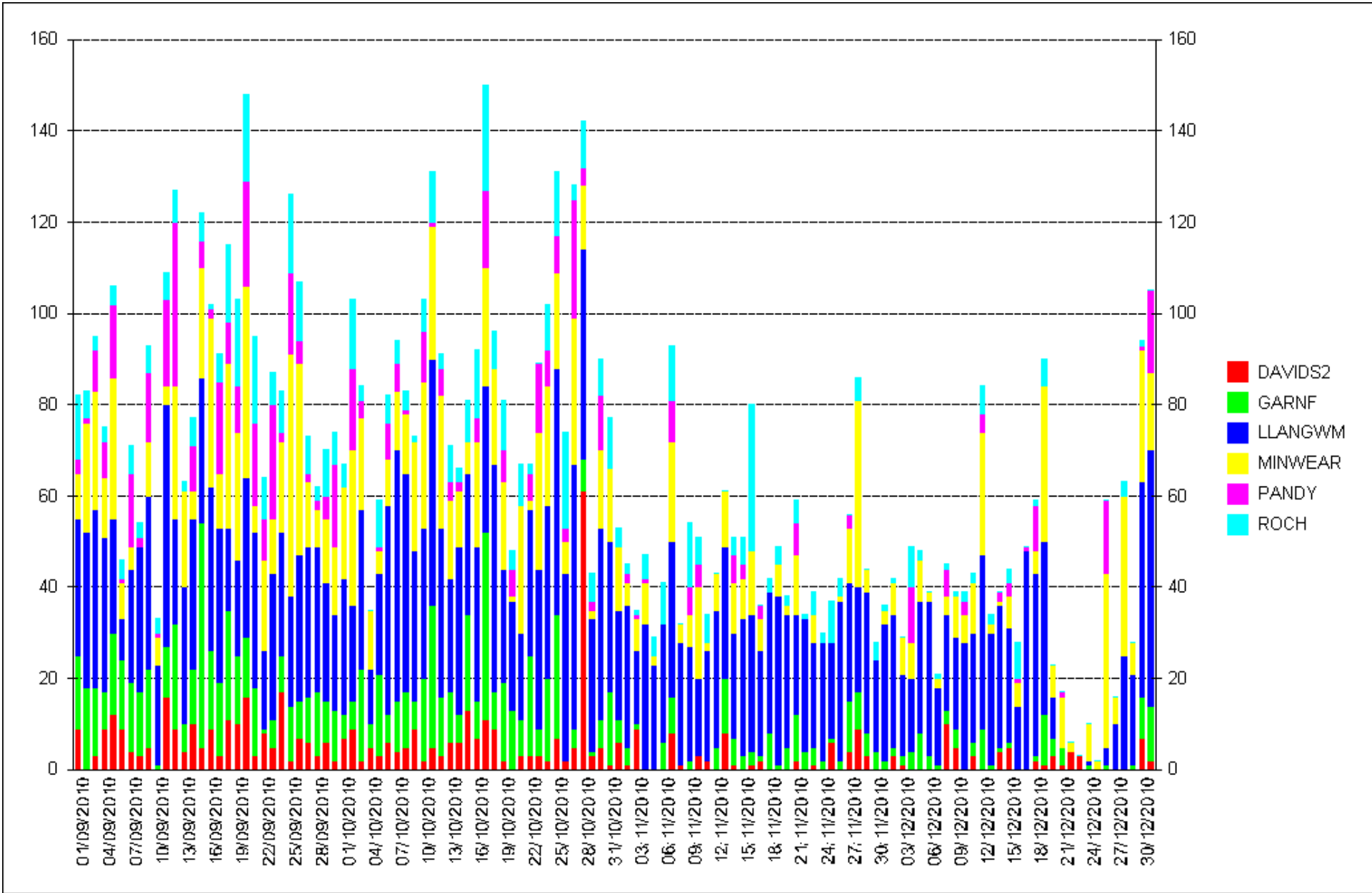
NEVERN



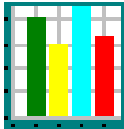
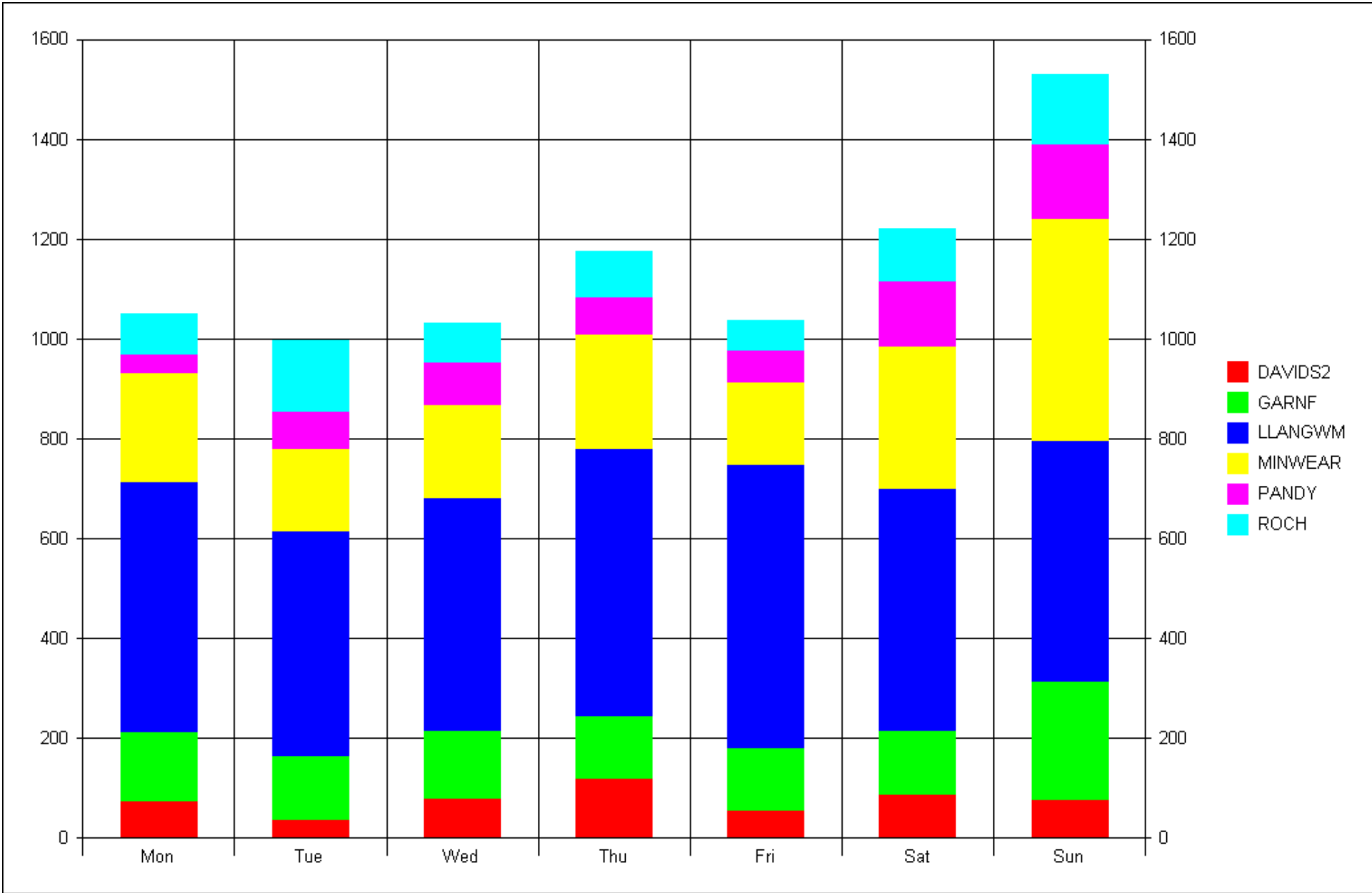
PANDY



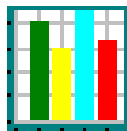
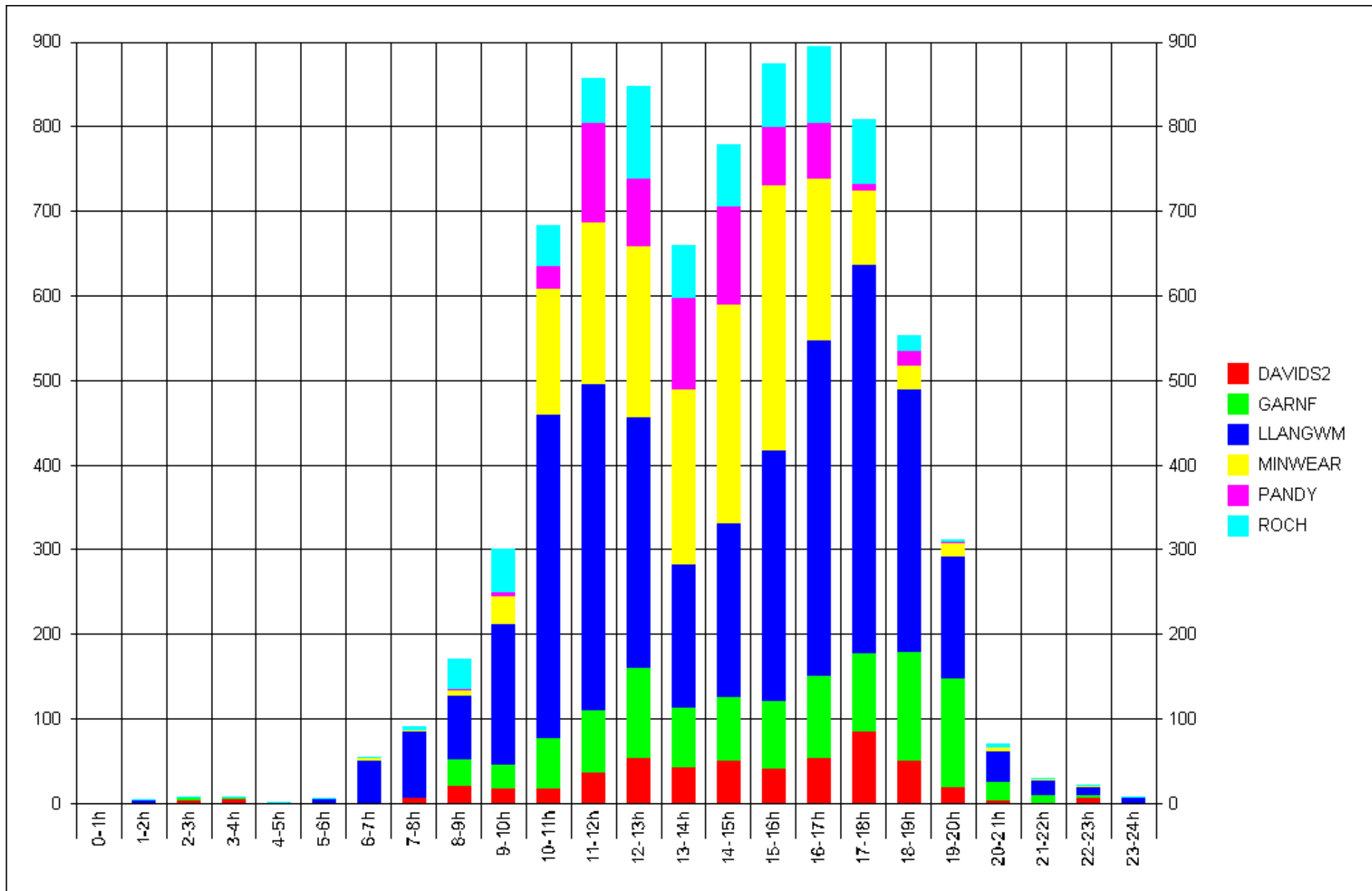
ROCH



ALL SITES DAILY TOTALS



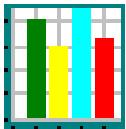
**ALL SITES WEEKDAY TOTALS
FOR SEPT-DEC 2010**



**ALL SITES TIME-OF-DAY TOTALS
FOR SEPT-DEC 2010**

Inland versus Coastal Sept-Dec 2010

INLAND		COAST	
DAVIDS2	536	ABER	1778
GARNF	1017	ANGLE	2786
LLANGWM	3490	BRHV	7692
MINWEAR	1693	MONK	3671
PANDY	616	NEWG2	2967
ROCH	687	STGV	4238
AVERAGE	1340	AVERAGE	3855



About 1 inland per 3 coastal walkers monitored

Actions

- The next data collection will be in May 2011 covering January to April
- No outstanding issues to solve