

A scenic view of a coastal harbor, likely in Pembrokeshire, Wales. The water is a deep blue, and numerous sailboats of various colors are anchored in the harbor. In the background, a small town with white buildings is visible on a green hillside. The sky is a clear, pale blue.

Pembrokeshire Coast Path Visitor Counters Report December 2010

**Linetop Ltd, 16 Roseheyworth Business Park
Abertillery, Blaenau Gwent NP13 1SP
Tel: 01495 321569 Email: stuart@linetop.co.uk**

Summary

- This report presents visitor data for Sept-Dec 2010 and totals for the year
- The 4-month total excluding Cwm-yr-Eglwys is 10,876 which is 8% up on the previous autumn
- The annual total for 2010 was 118,469 which is 6% up on 2009 on the same basis, and excluding Cwm-yr-Eglwys
- 2010 autumn was good for walking until extreme cold arrived in late November for the rest of the year

Site Codes and Equipment

ABER = Abereiddi cliff path, slab sensor (2003)

AMRO = Amroth kissing gate, slab sensor (2004-09)

ANGLE = Chapel Bay Fort, pyro sensor (2007)

BRHV = Broadhaven cliff path, double slab sensor (2001)
replaced with single large slab in narrower path (2008)

CWME = Cwm yr Eglwys gate, magnet sensor (2003)
replaced with a slab (2005) then a new slab (2009) after
damage by path repairers, then a new slab (2010) 50m
along the path after similar damage occurred again

DALE = Dale Fort stile, stile sensor (2001)
replaced with a slab on path nearby (2005). Removed
Sept 2010 due to path migration and widening.

MONK = Monkstone Point cliff path, stile sensor (2001)
slab sensor (2004), new logger (2008), new slab (2009)

NEWG = Newgale kissing gate, magnet sensor (2002-09)

NEWG2 = Newgale cliff path, slab sensor (2010)

STGV = Slab counter at St.Govan's car park gate (2005)

Technical Review

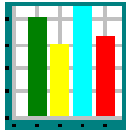
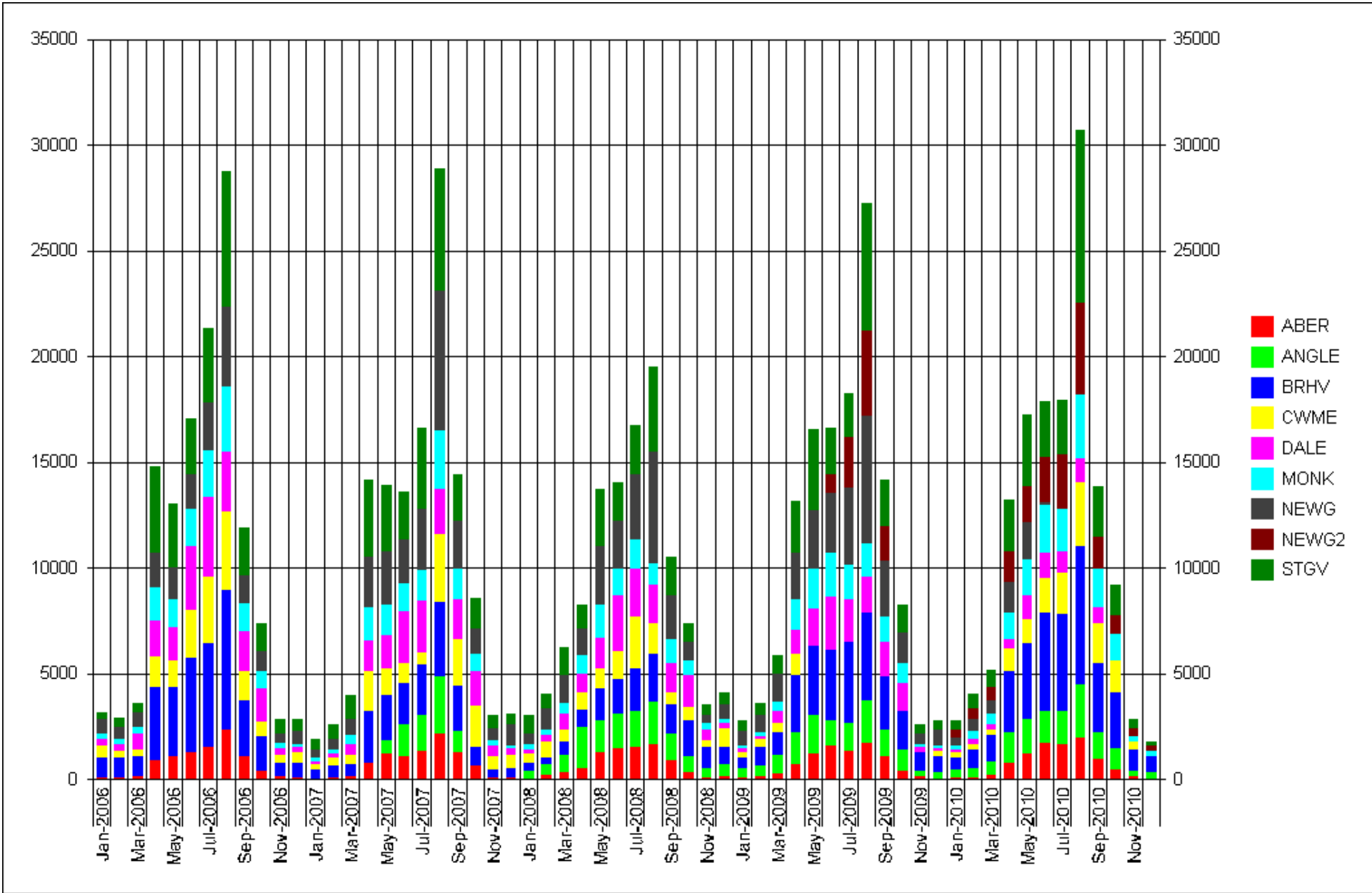
- Cwm yr Eglwys
 - The sensor stopped on 23 November when it appears that someone dug out the gateway base layer to improve the drainage. This the second time that this has happened.
 - The counter has been re-instated along the same path about 50m nearer the village
- All other sites working properly

MONTHLY TOTALS

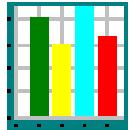
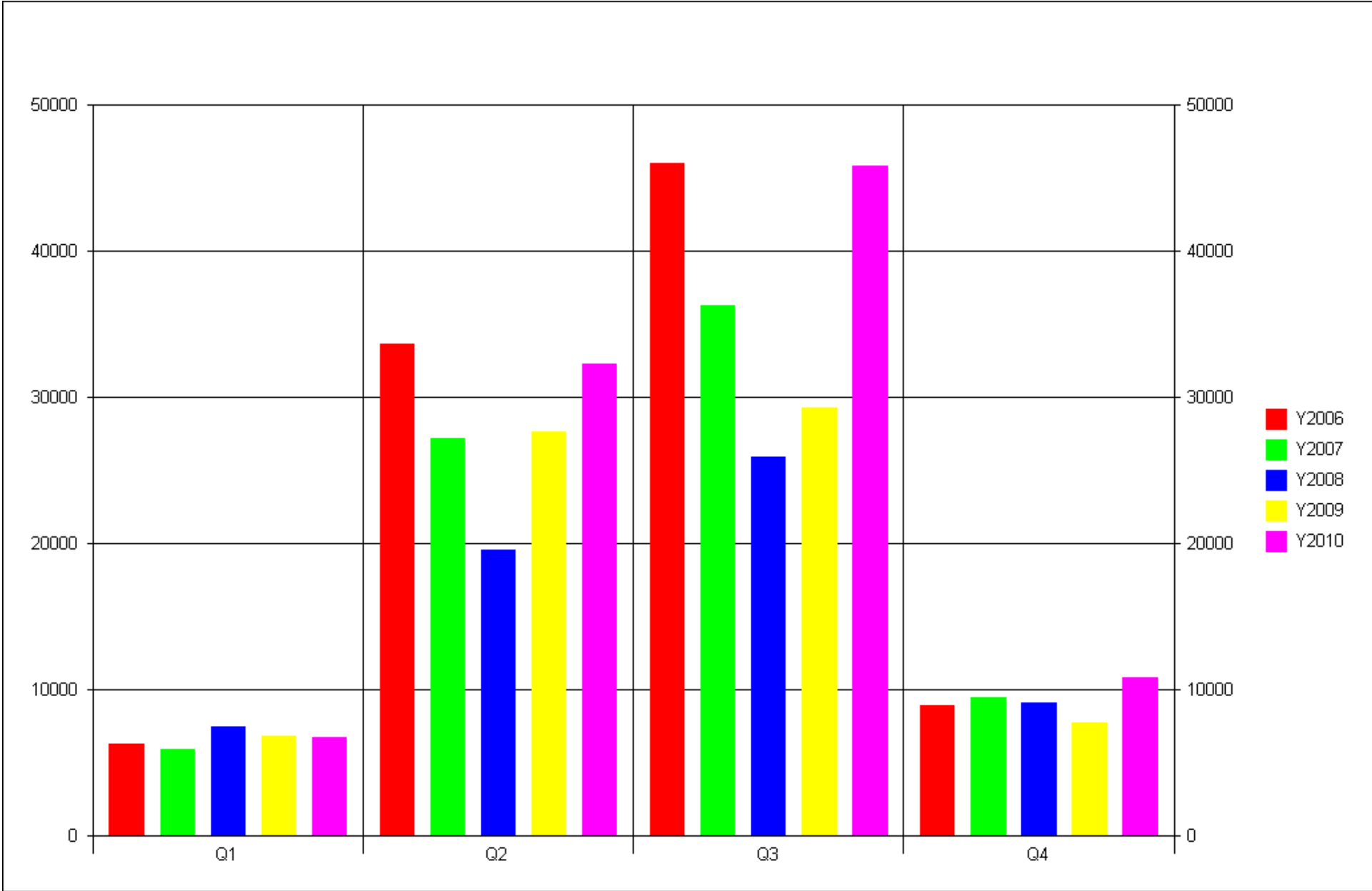
	ABER	ANGLE	BRHV	CWME	MONK	NEWG2	STGV
Sep-10	986	1259	3315	1858	1828	1519	2332
Oct-10	512	974	2641	1545	1271	840	1413
Nov-10	186	278	993	360	271	376	364
Dec-10	94	275	743	0	301	232	129
TOTAL	1778	2786	7692	n/a	3671	2967	4238
	ABER	ANGLE	BRHV	CWME	MONK	NEWG2	STGV
Sep-09	1149	1248	2542	0	1217	1728	2109
Oct-09	469	980	1853	0	970	940	1222
Nov-09	191	239	868	0	142	313	395
Dec-09	68	291	762	290	98	494	416
TOTAL	1877	2758	6025	n/a	2427	3475	4142
DIFF	-5%	1%	28%	n/a	51%	-15%	2%

FISCAL YEAR RESULTS 2010

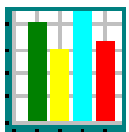
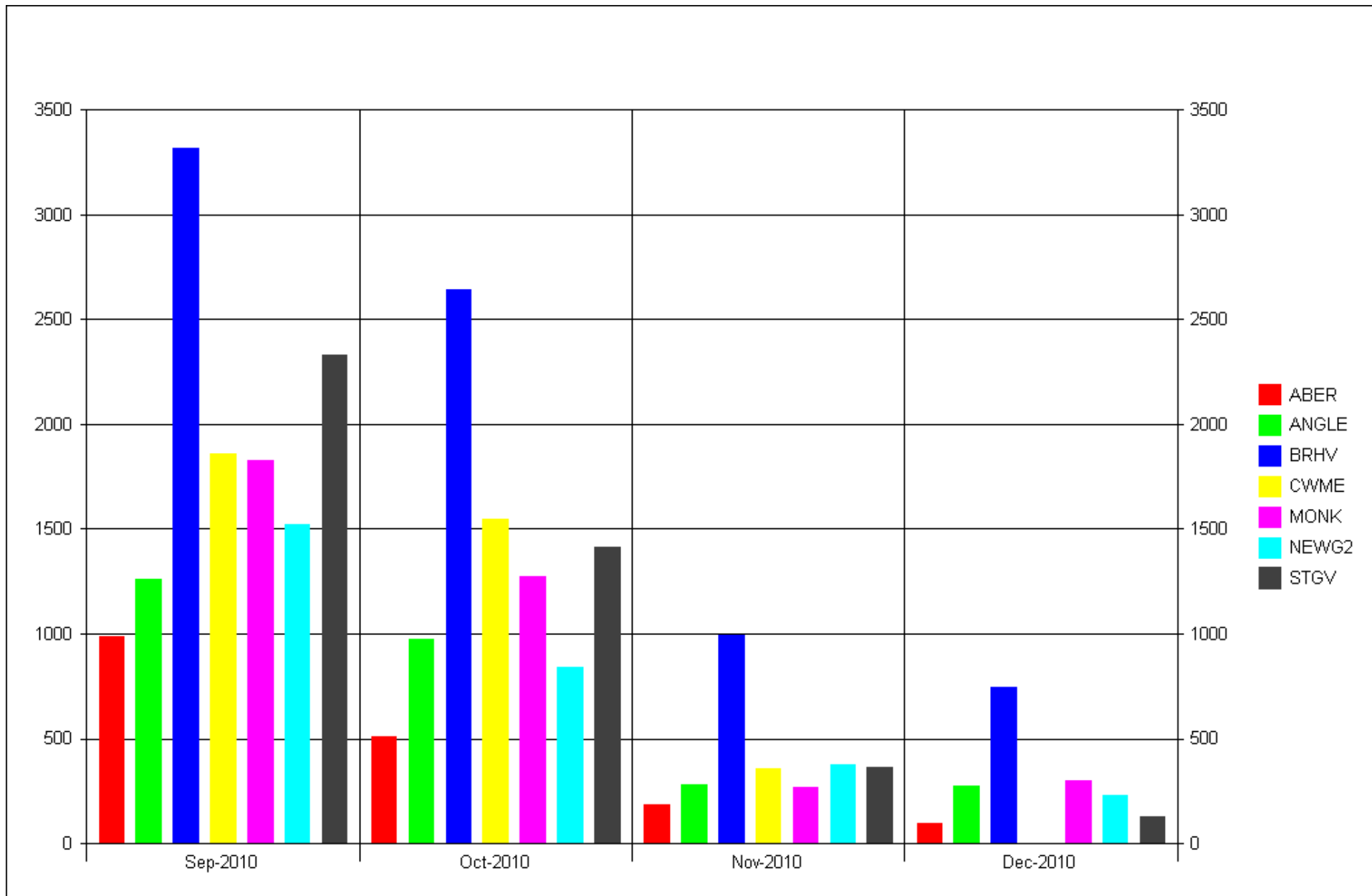
	ABER	ANGLE	BRHV	CWME	DALE	MONK	NEWG2	STGV
Jan-10	116	390	578	222	167	162	389	368
Feb-10	118	461	894	219	281	372	538	584
Mar-10	286	584	1269	231	269	537	602	795
Apr-10	853	1410	2925	1022	453	1242	1468	2354
May-10	1269	1633	3572	1165	1101	1676	1760	3330
Jun-10	1777	1507	4617	1664	1188	2303	2182	2550
Jul-10	1719	1577	4547	1969	984	2060	2572	2528
Aug-10	2019	2497	6559	3008	1137	3001	4361	8088
Sep-10	986	1259	3315	1858	758	1828	1519	2332
Oct-10	512	974	2641	1545	n/a	1271	840	1413
Nov-10	186	278	993	360	n/a	271	376	364
Dec-10	94	275	743	n/a	n/a	301	232	129
TOTAL	9935	12845	32653	13263	6338	15024	16839	24835



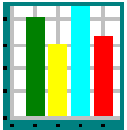
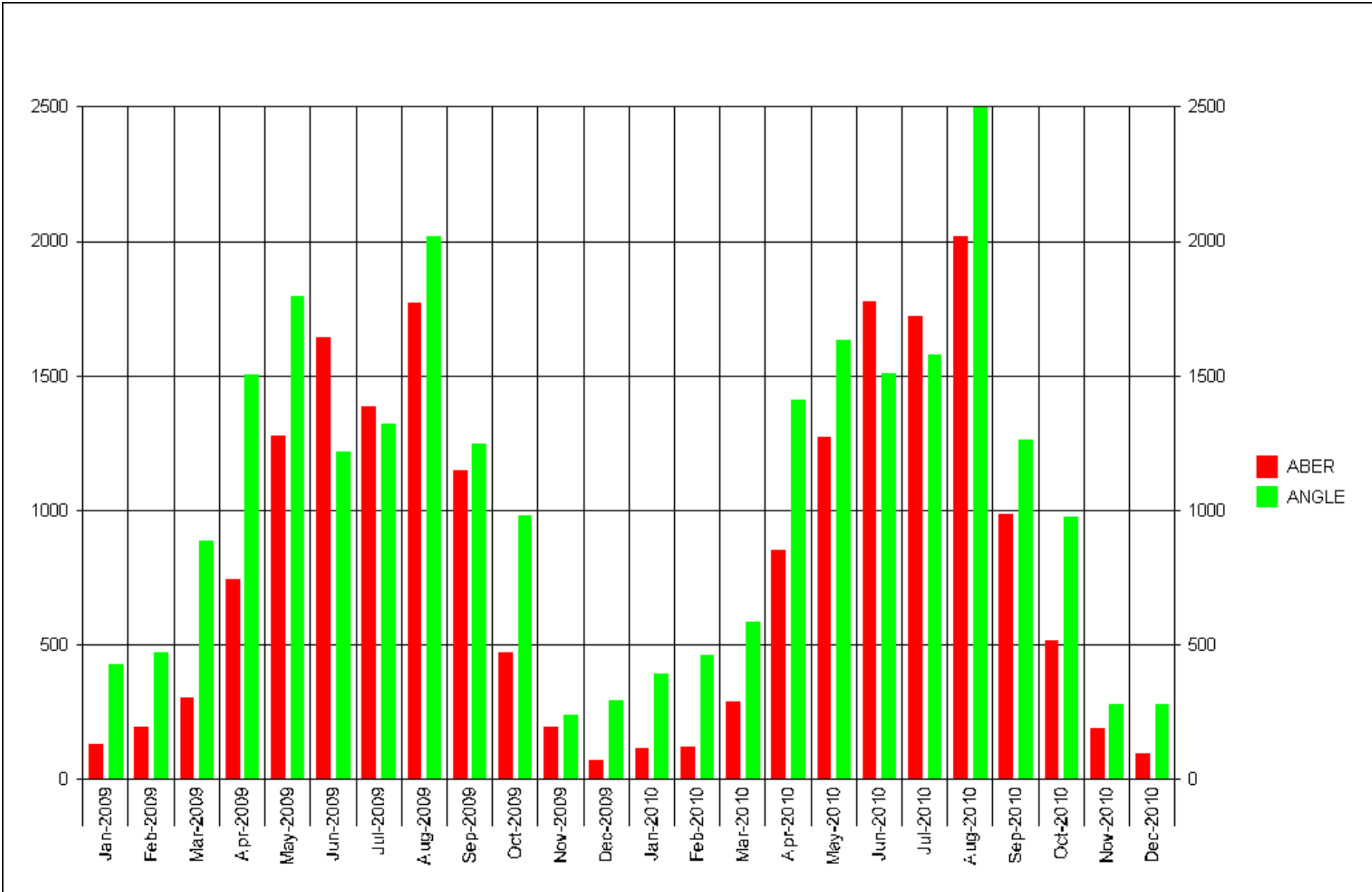
Monthly totals since 2006



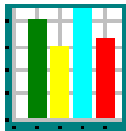
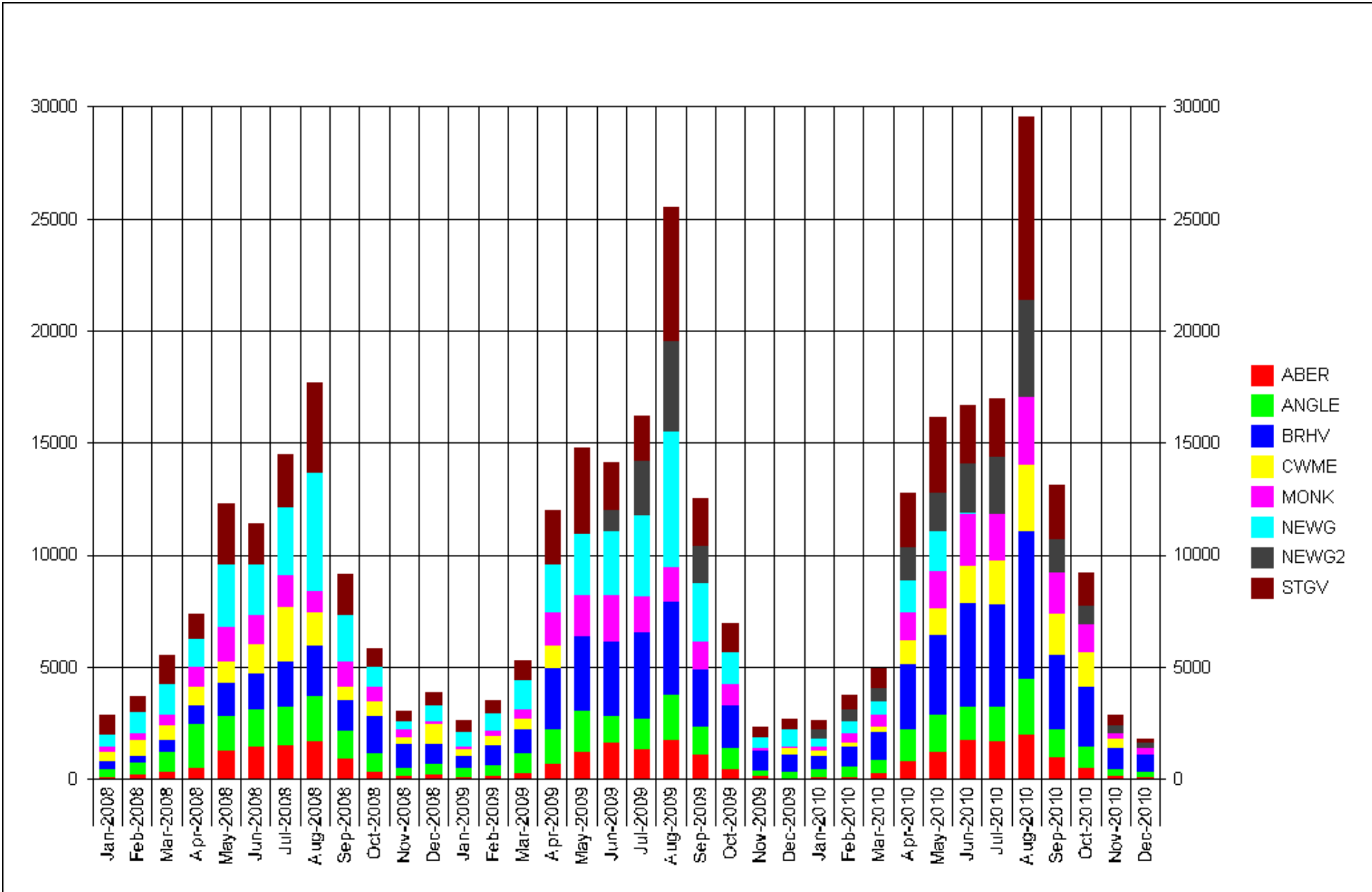
Quarterly trends across the main sites



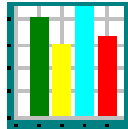
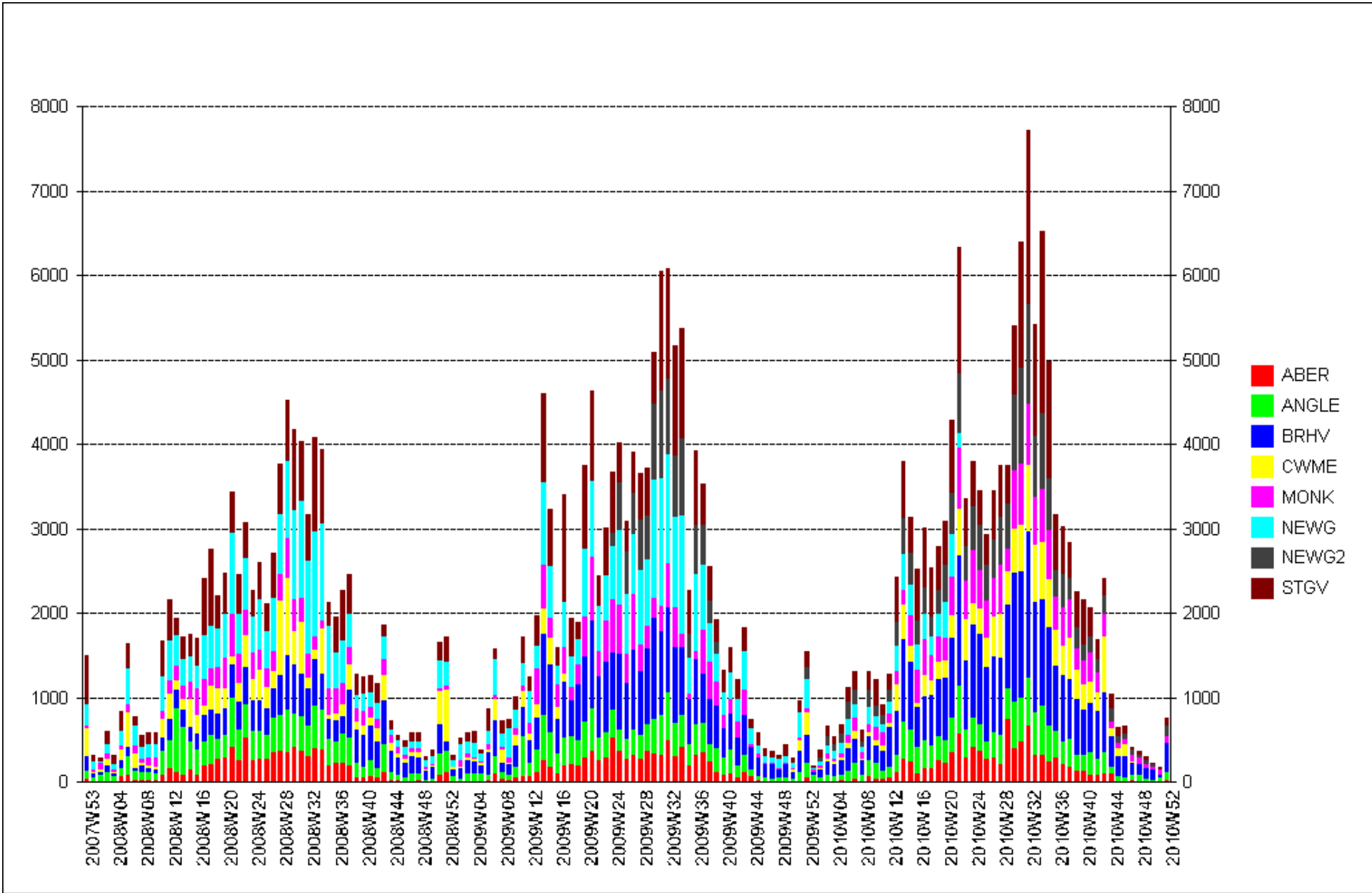
RECENT MONTHLY TOTALS BY SITE



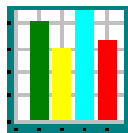
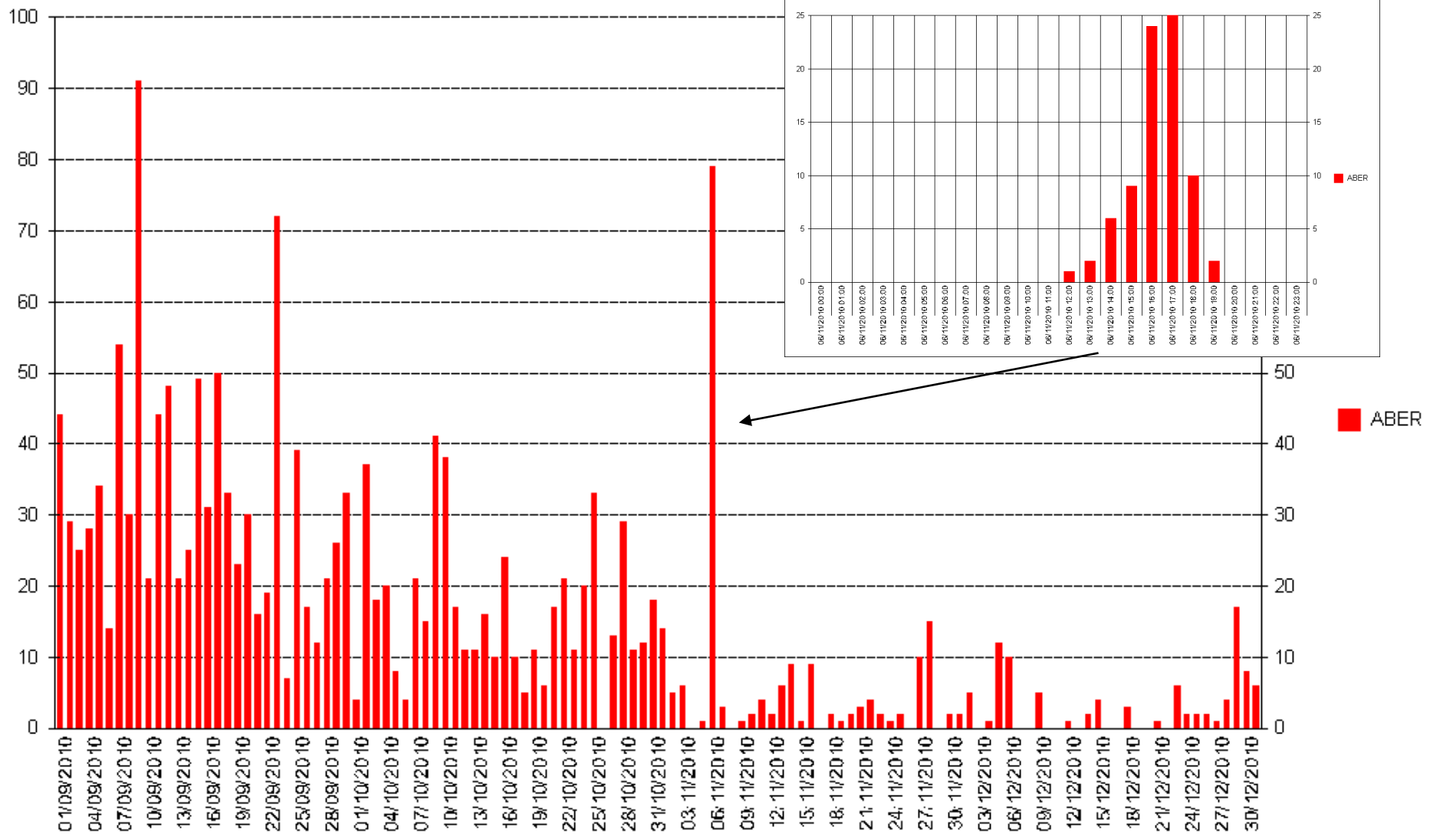
**Abereiddy remains 75-80% of Angle when measured over a year
but is much less visited area in winter**



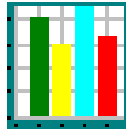
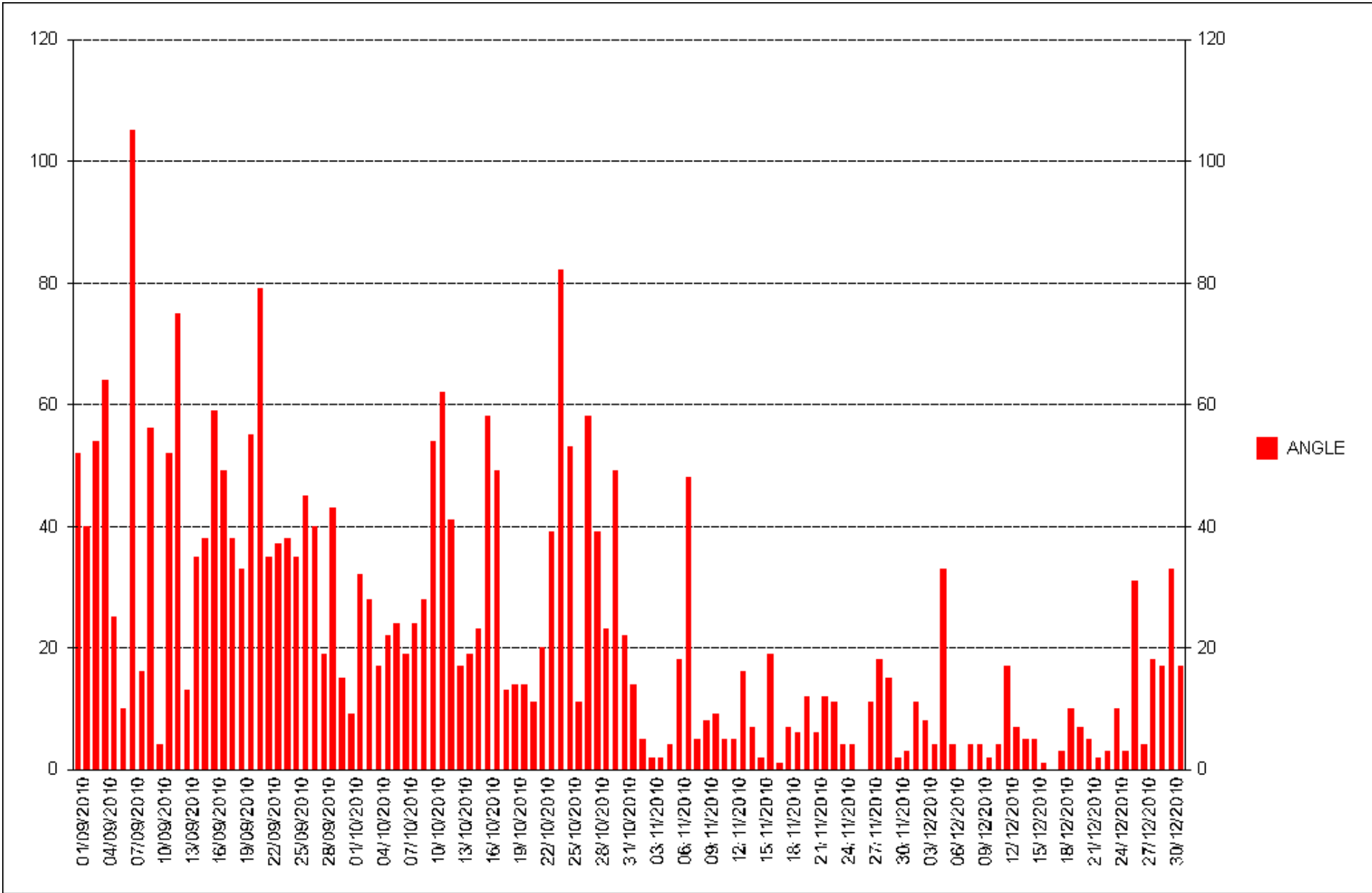
Monthly totals for 3 years



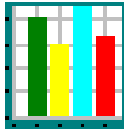
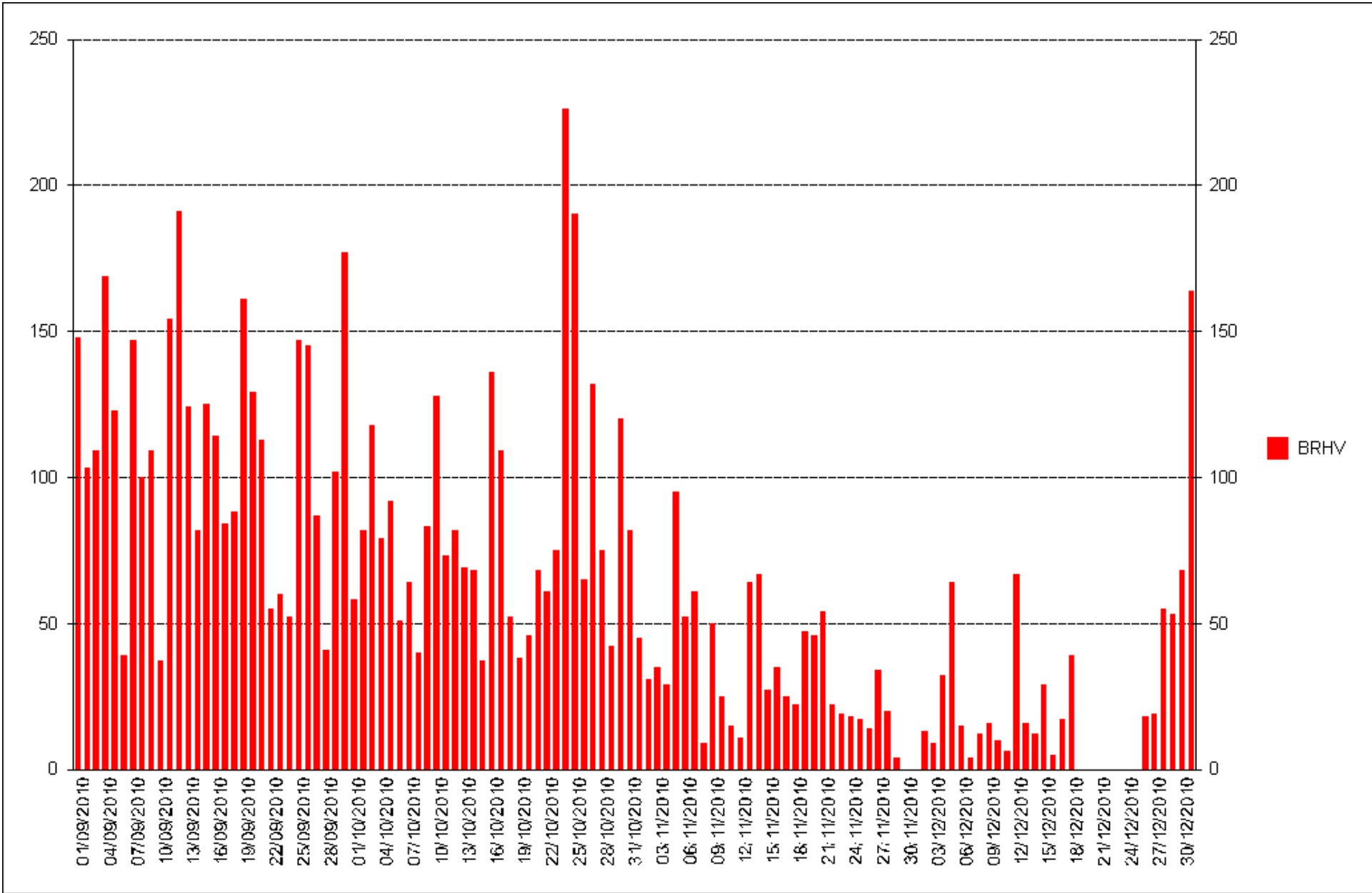
WEEKLY TOTALS



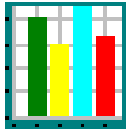
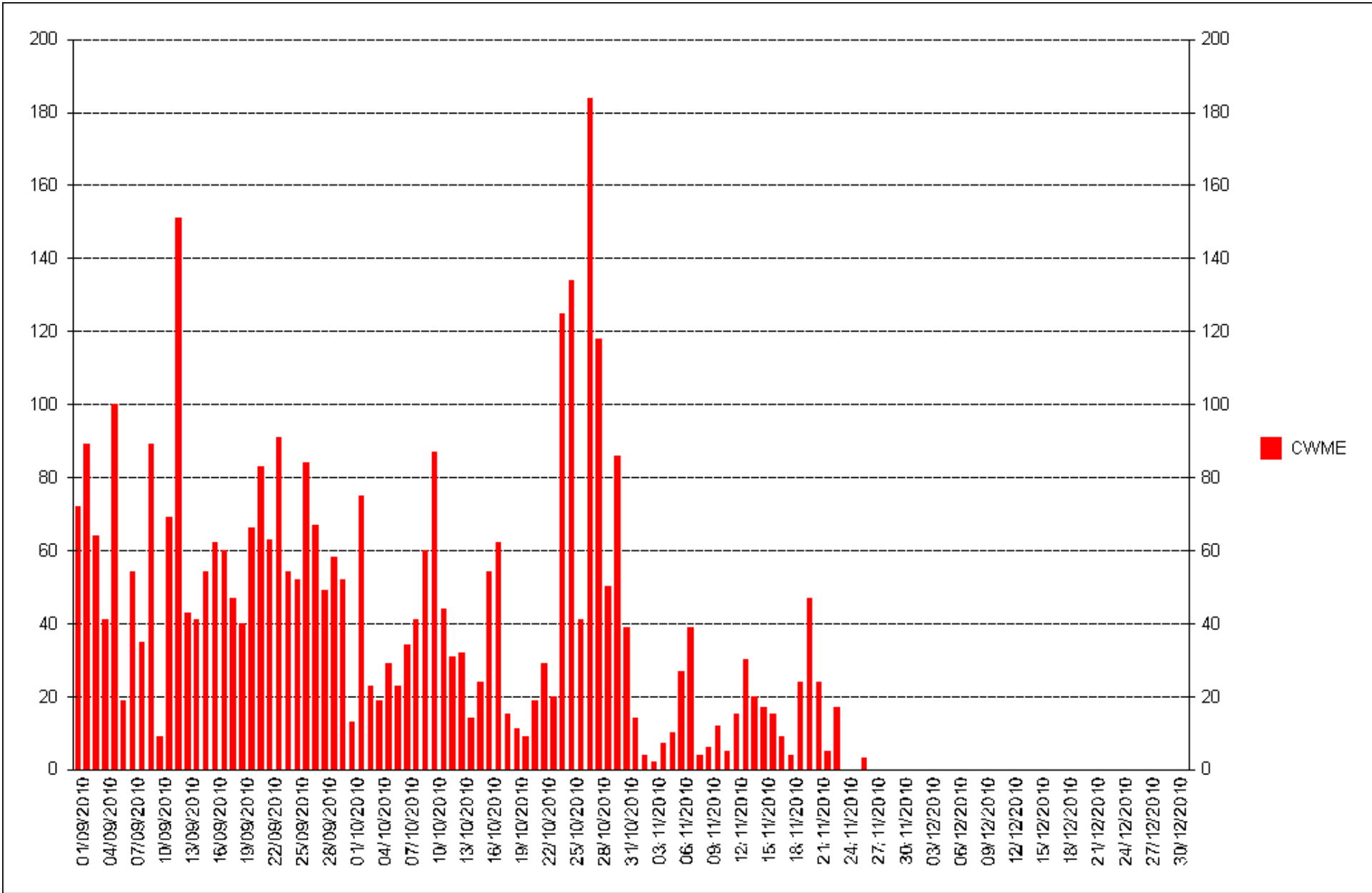
**Abereiddi – Saturday 6 November was a very busy day
This looks like genuine walker data**



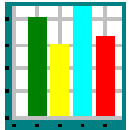
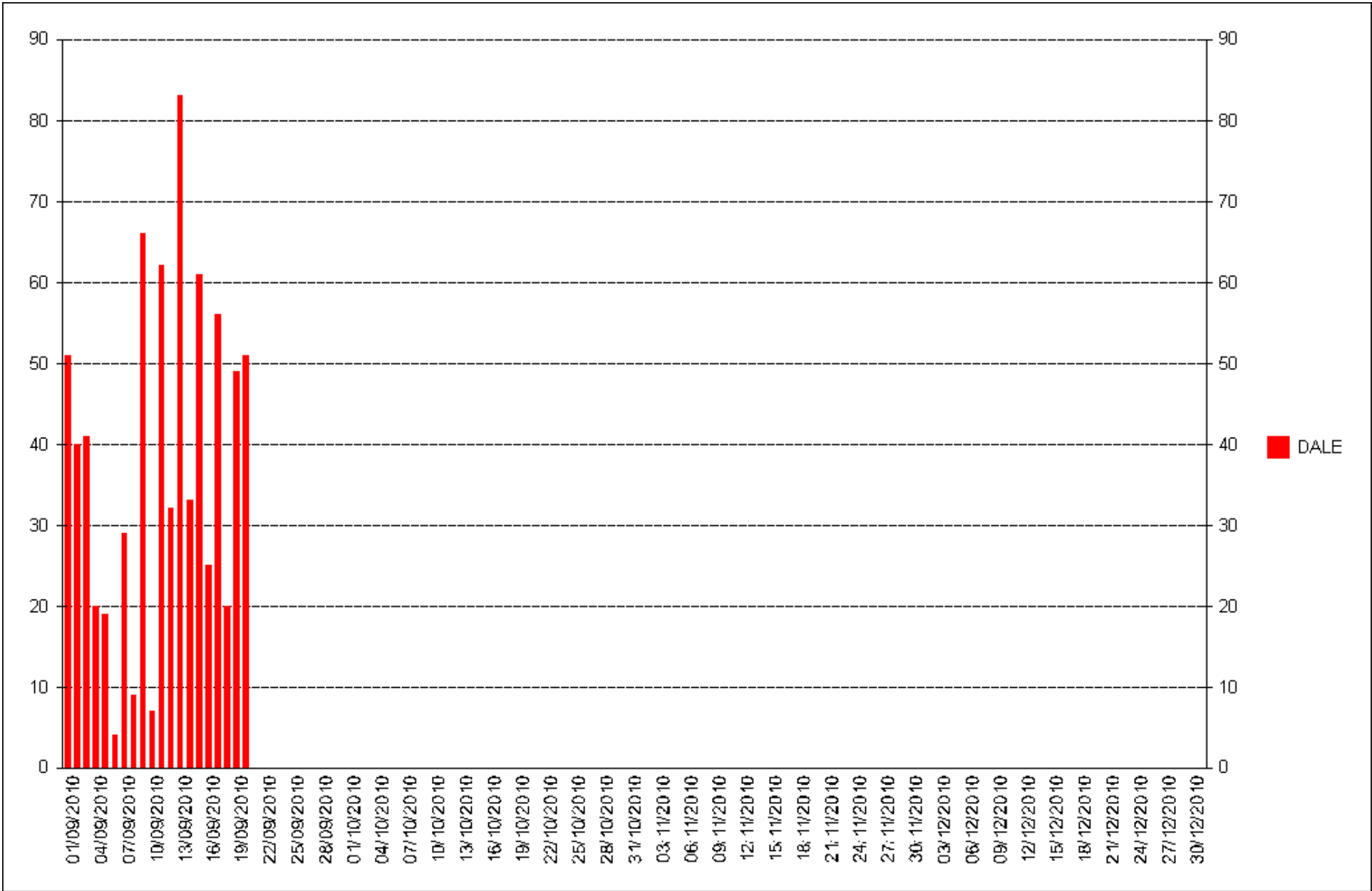
ANGLE



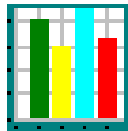
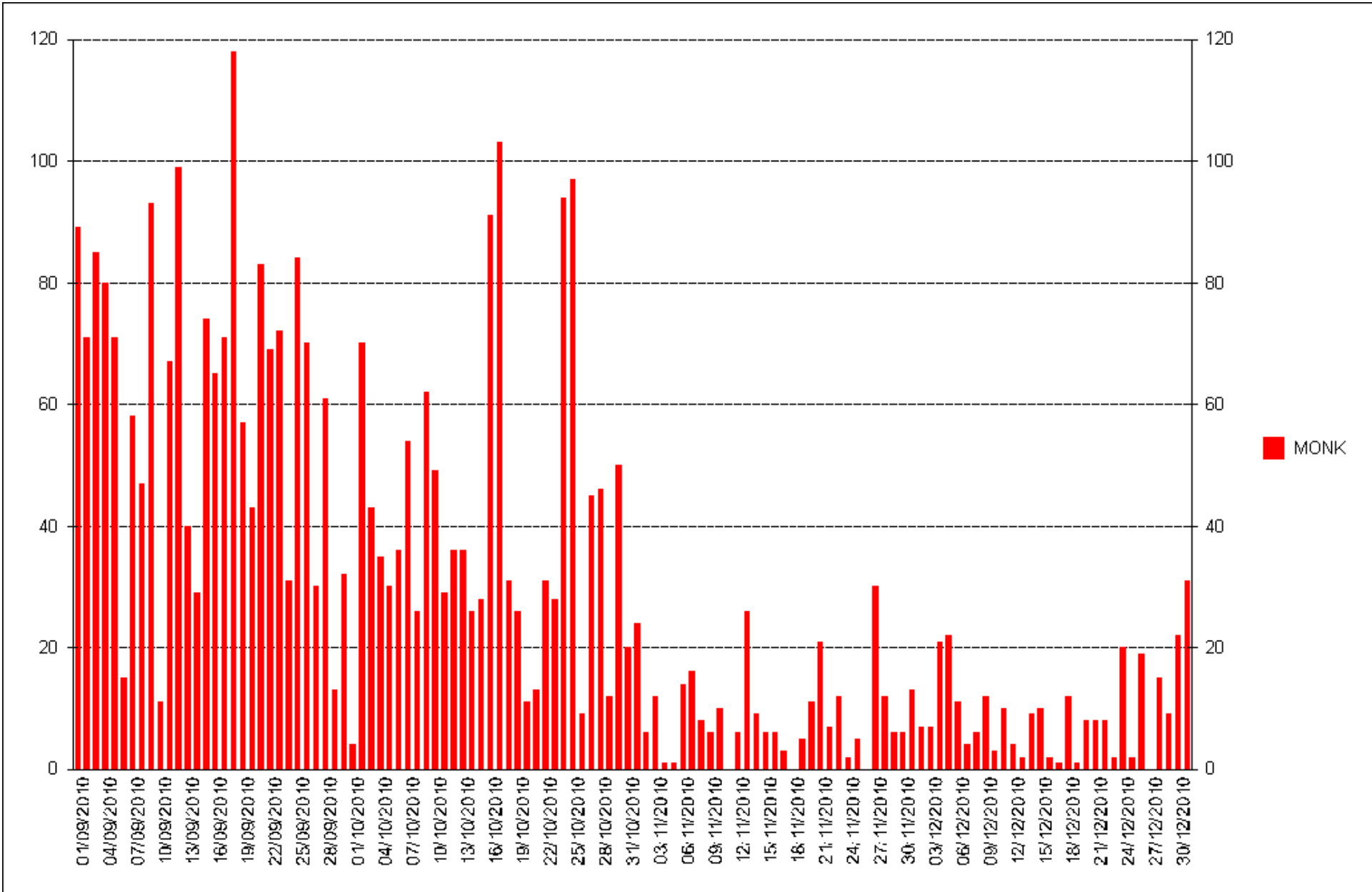
BROADHAVEN



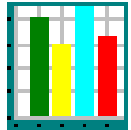
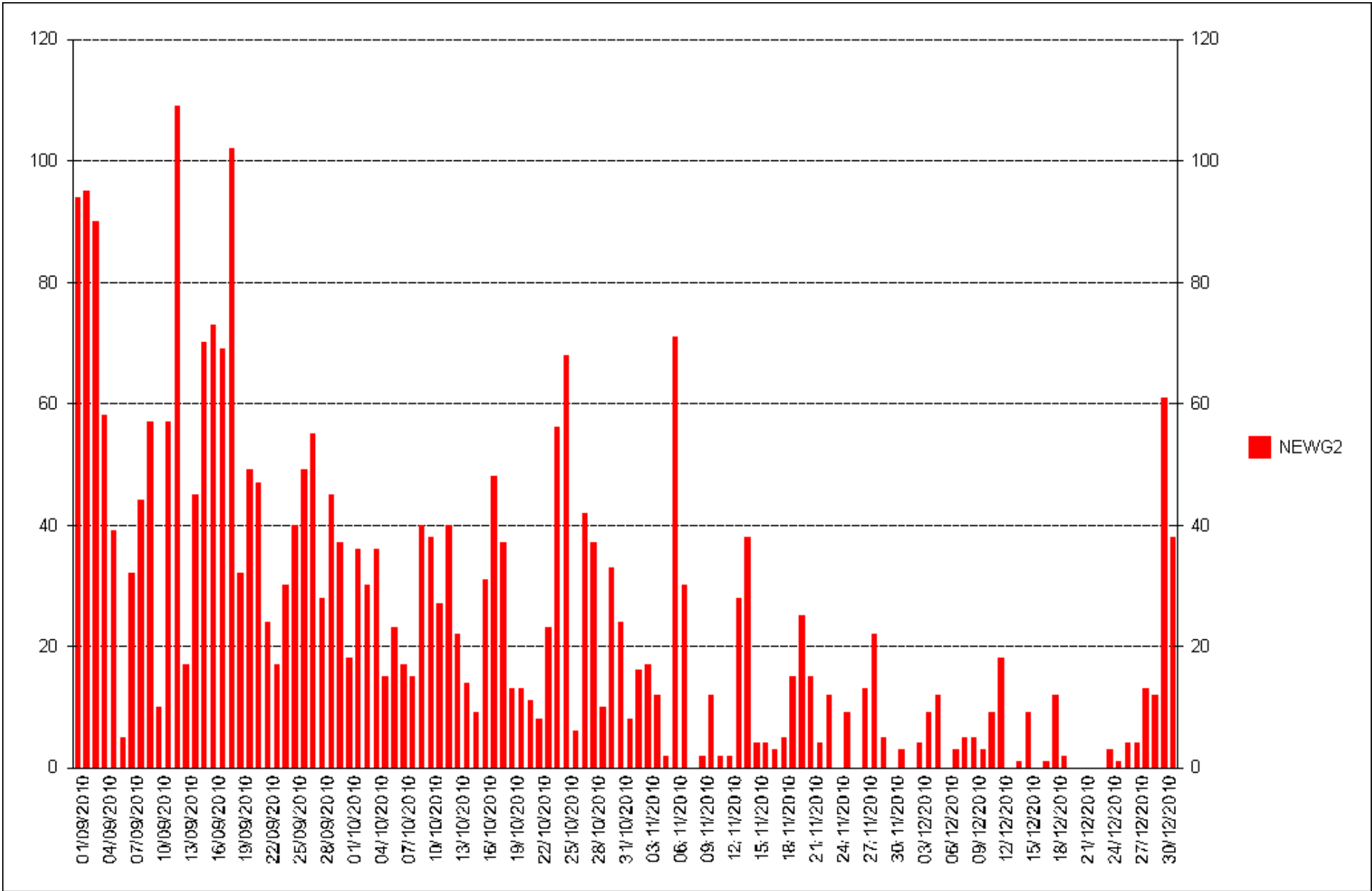
CWM YR EGLWYS – SENSOR DAMAGED IN LATE NOVEMBER



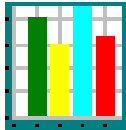
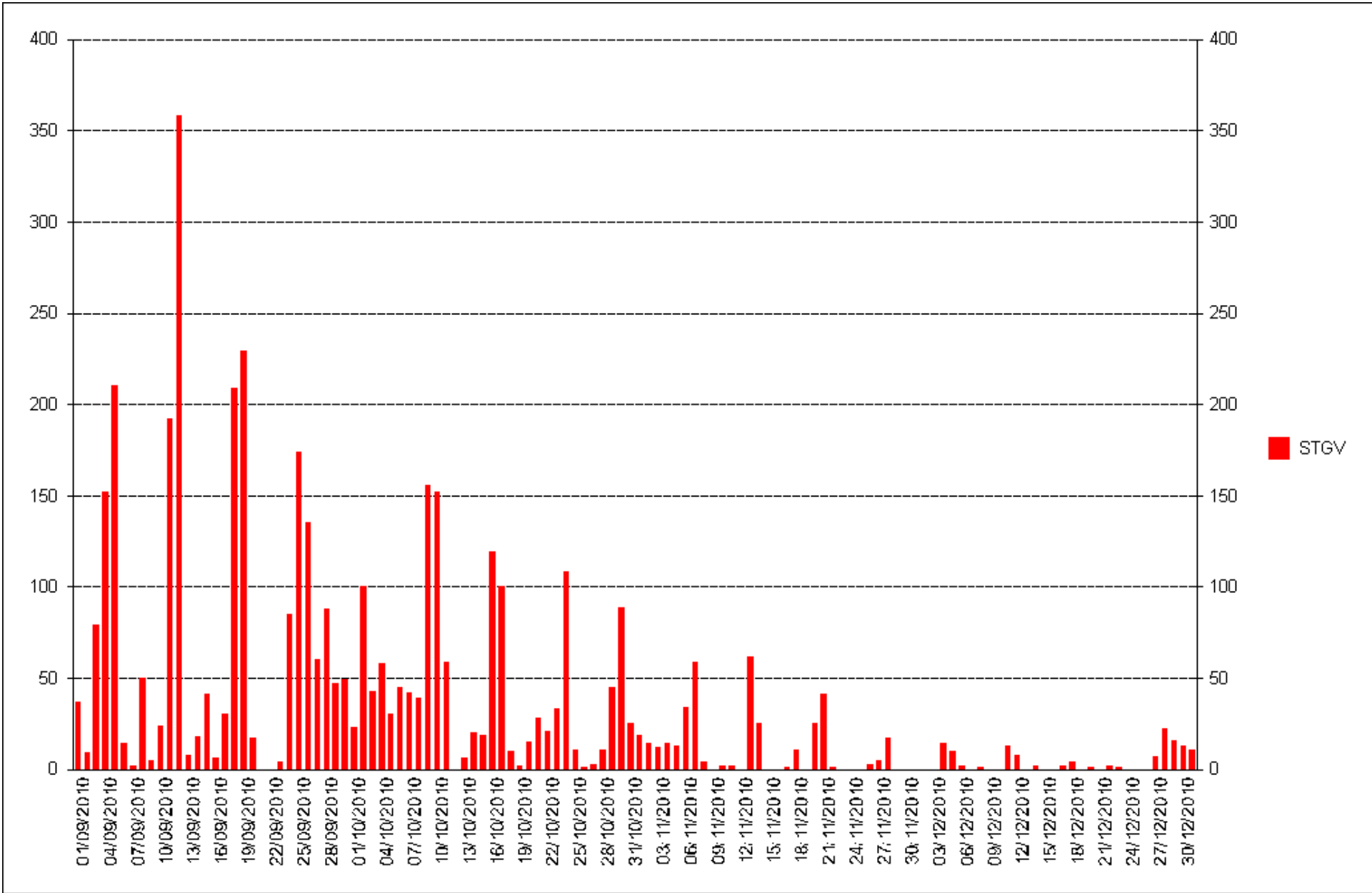
DALE – SYSTEM TAKEN OUT DUE TO PATH CHANGING



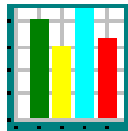
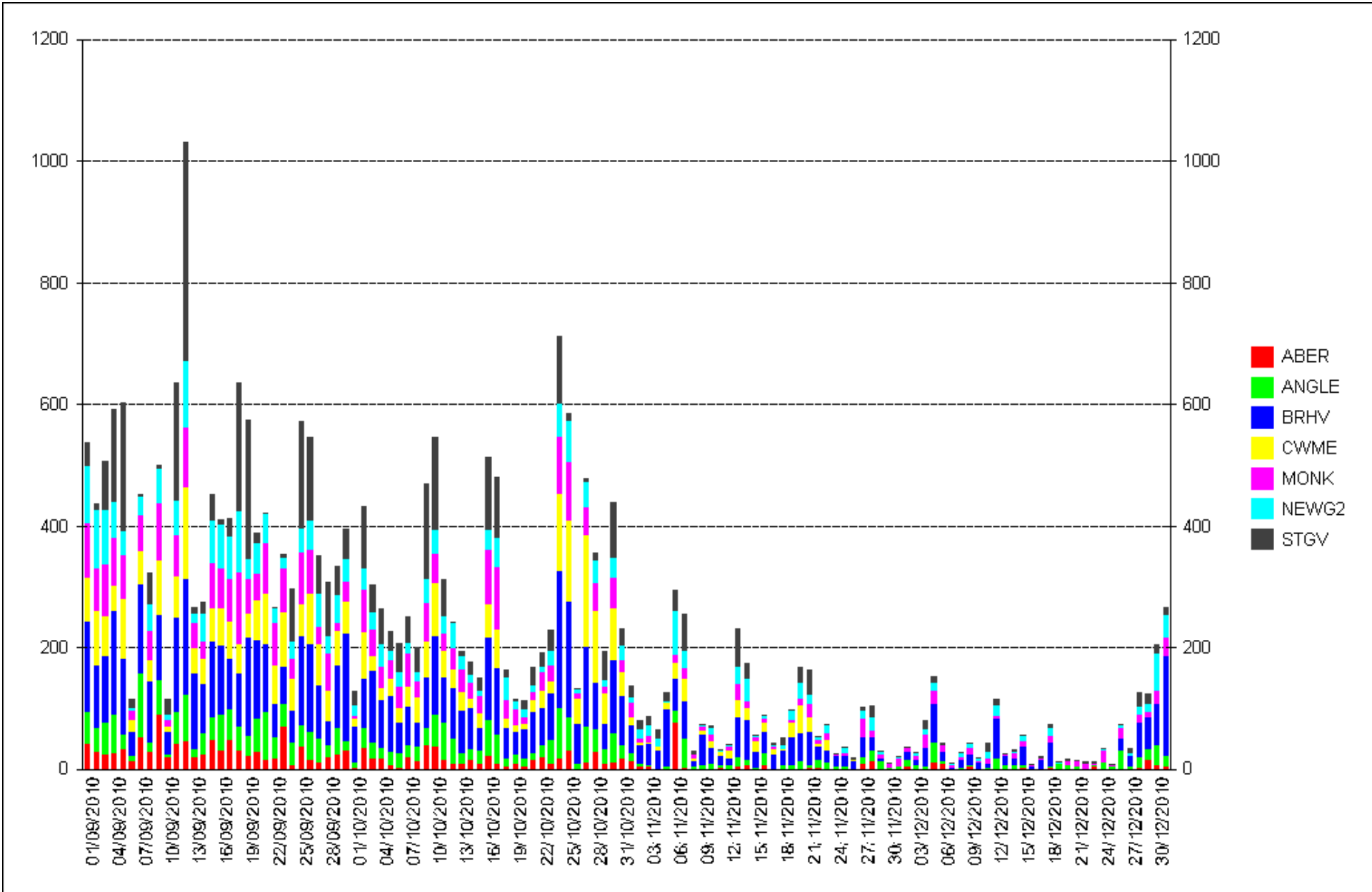
MONKSTONE POINT



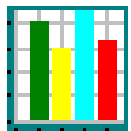
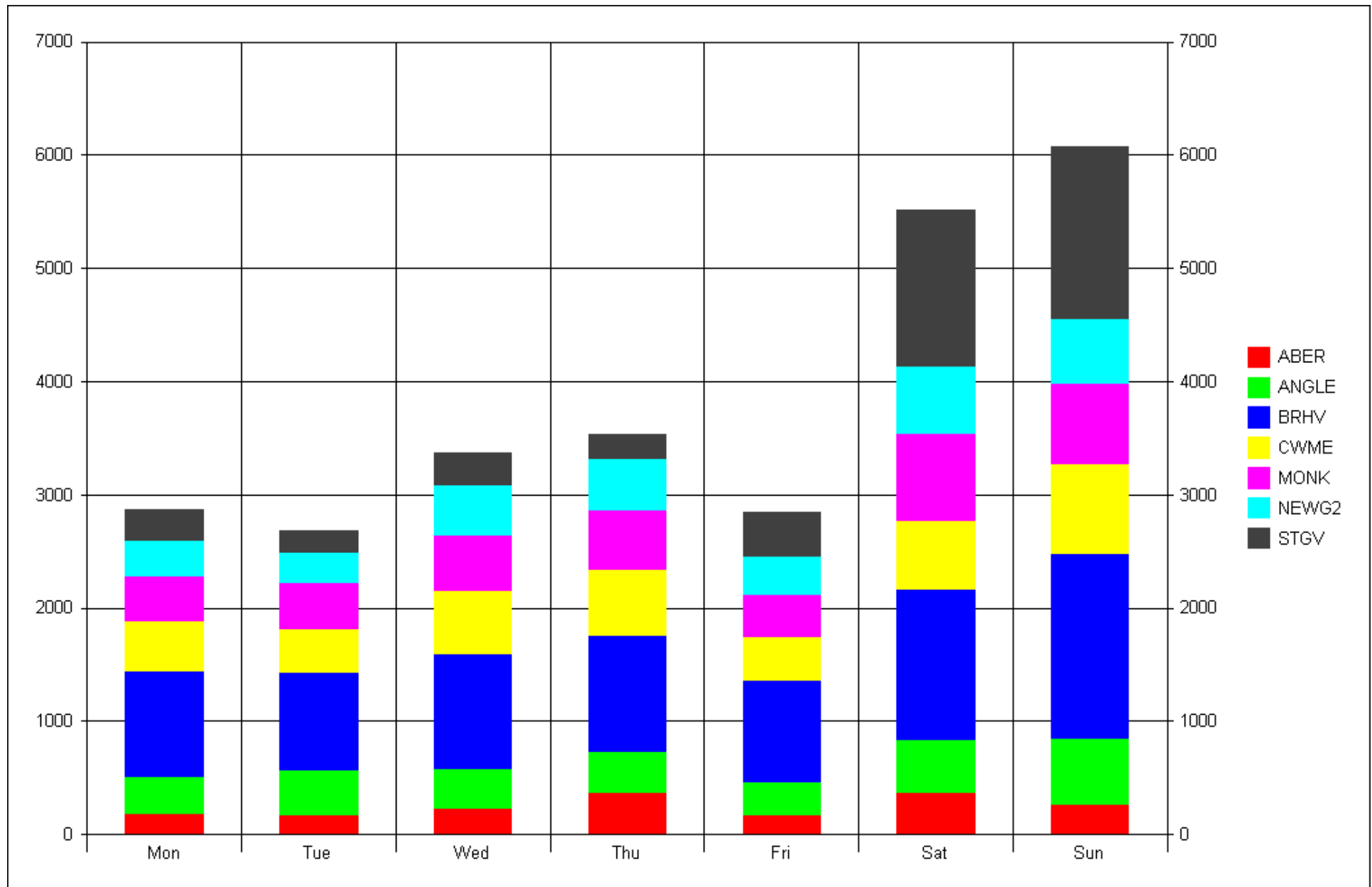
NEWGALE 2



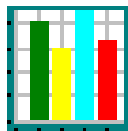
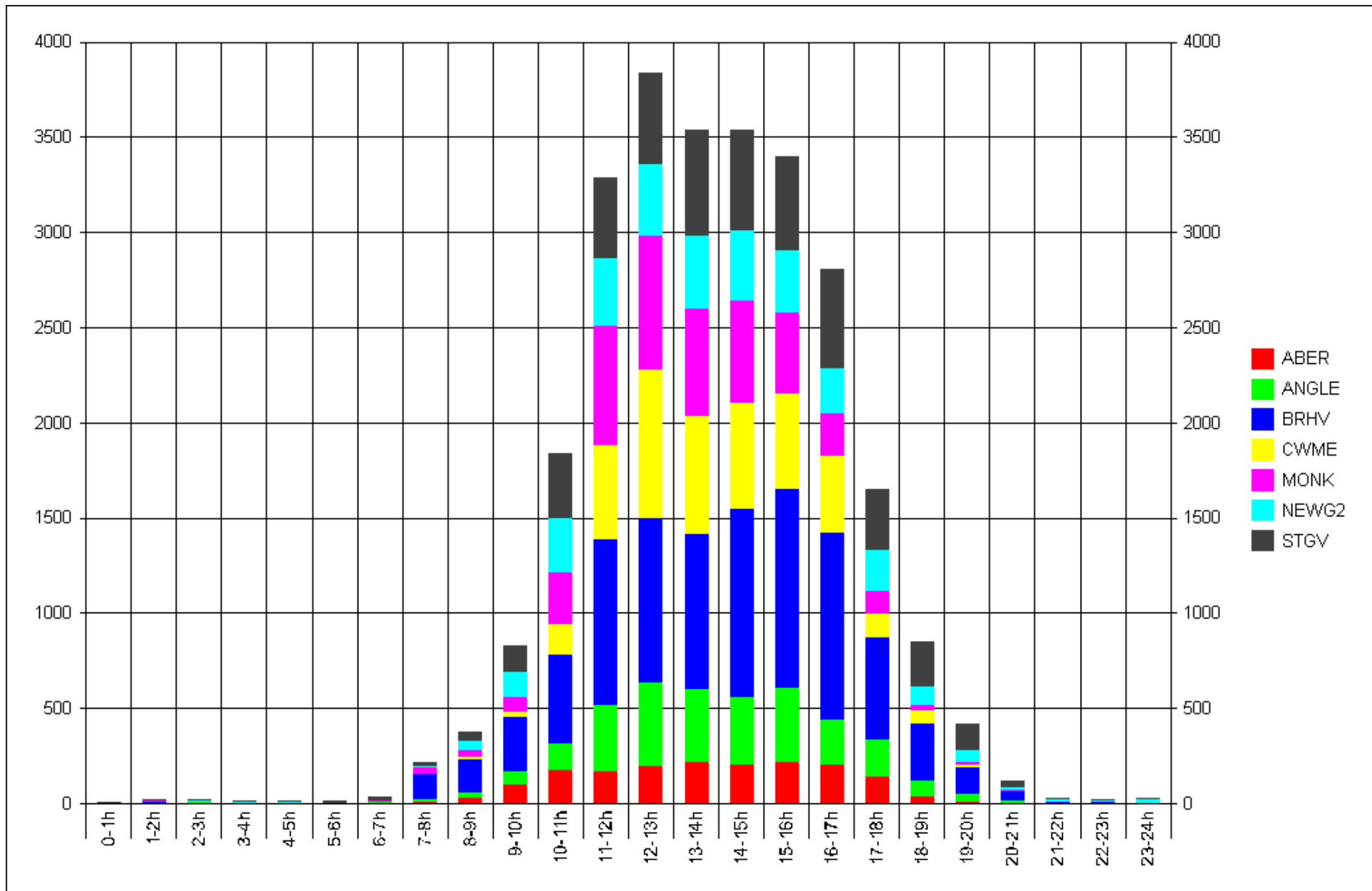
ST GOVANS



ALL SITES DAILY TOTALS



ALL SITES SEPT-DEC 2010



ALL SITES SEPT-DEC 2010

Actions

- The next data collection will be in May 2011 to obtain the Jan-April results
- The slab sensor at Aberreiddy still works (7 years old) but must be near end of life
 - we can refurbish and then re-use the former Dale equipment here during 2011
- Collect the first data and check on new counter at Cwm-yr-Eglwys