

A scenic view of a coastal town and harbor. The foreground shows a large body of water filled with numerous sailboats of various colors and sizes. In the middle ground, a small town with white buildings and a church spire is visible on a peninsula. The background features rolling green hills under a clear blue sky.

Pembrokeshire Coast Path Visitor Counters Report January-May 2011

**Linetop Ltd, 16 Roseheyworth Business Park
Abertillery, Blaenau Gwent NP13 1SP
Tel: 01495 321569 Email: stuart@linetop.co.uk**

Summary

- This report presents visitor data for Jan-May 2011
- The total for all sites, except STGV and CWME which are incomplete, was 28,905 compared to 25,104 a year earlier, an increase of 15%

Site Codes and Equipment

ABER = Abereiddi cliff path, slab sensor (2003)

AMRO = Amroth kissing gate, slab sensor (2004-09)

ANGLE = Chapel Bay Fort, pyro sensor (2007)

BRHV = Broadhaven cliff path, double slab sensor (2001)
replaced with single large slab in narrower path (2008)

CWME = Cwm yr Eglwys gate, magnet sensor (2003)
replaced with a slab (2005) then a new slab (2009) after
damage by path repairers, then a new slab (2010) 50m
along the path after similar damage occurred again

DALE = Dale Fort stile, stile sensor (2001)
replaced with a slab on path nearby (2005). Removed
Sept 2010 due to path migration and widening.

MONK = Monkstone Point cliff path, stile sensor (2001)
slab sensor (2004), new logger (2008), new slab (2009)

NEWG = Newgale kissing gate, magnet sensor (2002-09)

NEWG2 = Newgale cliff path, slab sensor (2010)

STGV = Slab counter at St.Govan's car park gate (2005)

Technical Review

- Cwm yr Eglwys
 - The sensor stopped on the 23 November due to damage to the gate surface. A new slab sensor was installed nearby by Linetop in February 2011. The subsequent data recorded is in line with historic levels.
- St Govans data was not collected due to the army range being active.
- All other sites working properly

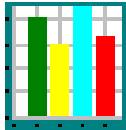
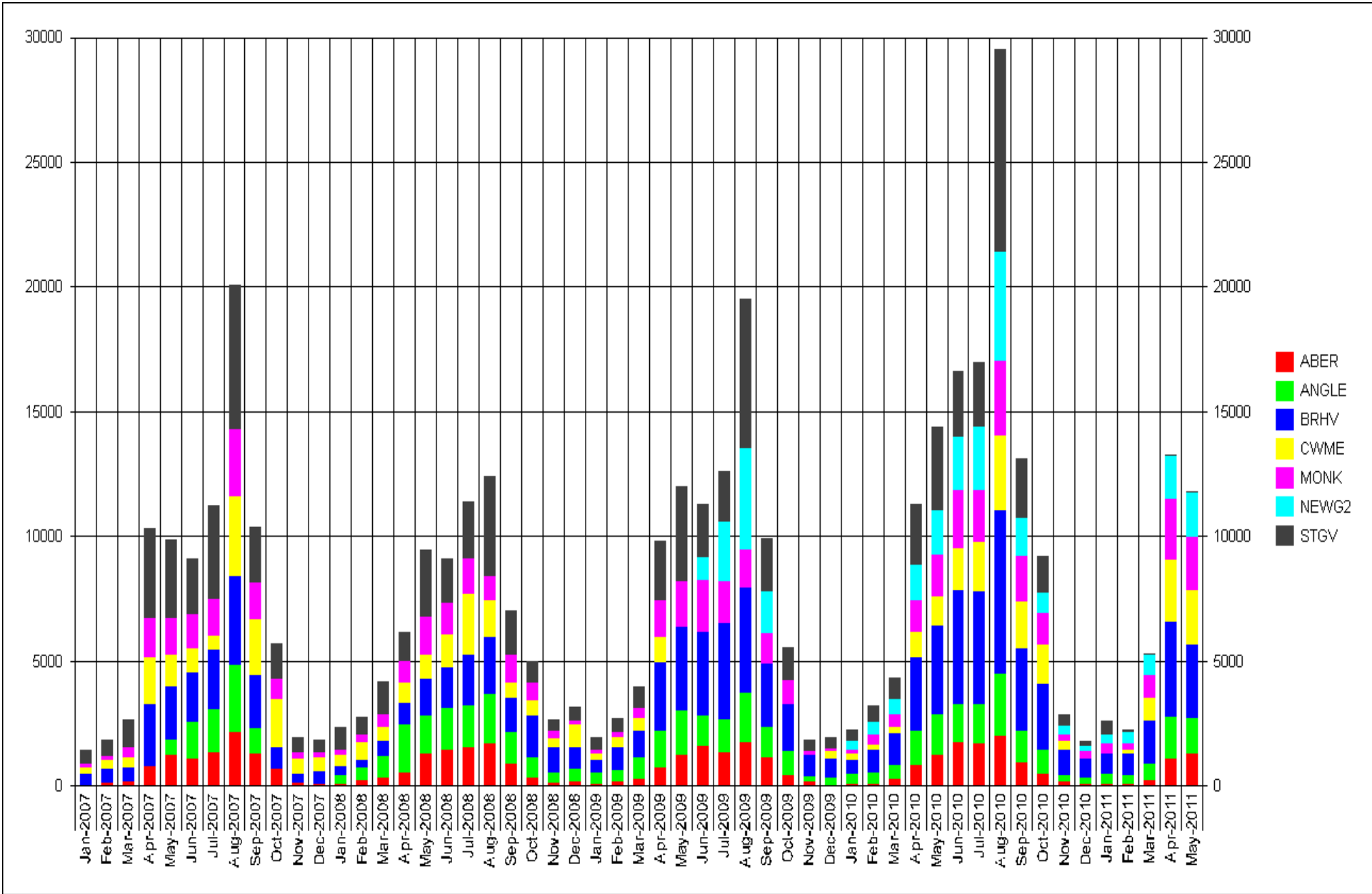
MONTHLY TOTALS

	ABER	ANGLE	BRHV	CWME	MONK	NEWG2	STGV
Jan-11	89	414	838	0	395	375	460
Feb-11	99	377	859	133	264	479	n/a
Mar-11	248	667	1729	907	905	817	n/a
Apr-11	1122	1697	3791	2504	2422	1726	n/a
May-11	1301	1427	2959	2212	2135	1770	n/a
TOTAL	2859	4582	10176	5756	6121	5167	460
	ABER	ANGLE	BRHV	CWME	MONK	NEWG2	STGV
Jan-10	116	390	578	222	162	389	368
Feb-10	118	461	894	219	372	538	584
Mar-10	286	584	1269	231	537	602	795
Apr-10	853	1410	2925	1022	1242	1468	2354
May-10	1269	1633	3572	1165	1676	1760	3330
TOTAL	2642	4478	9238	2859	3989	4757	7431
DIFF	3%	-13%	-17%	90%	27%	1%	n/a

RESULTS FOR FISCAL YEAR TO MAY 2011

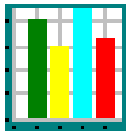
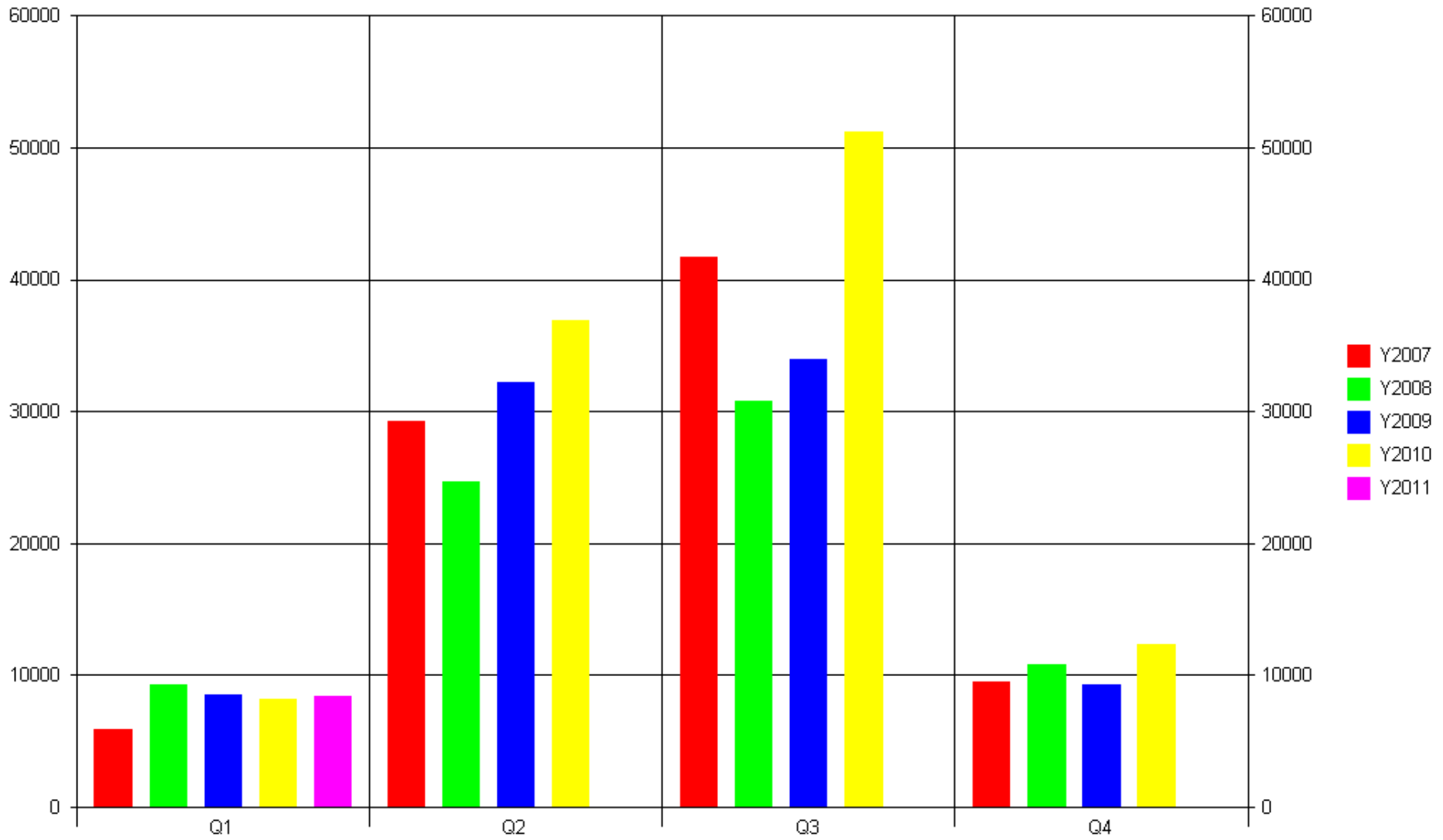
	ABER	ANGLE	BRHV	CWME	MONK	NEW G2	STGV
Jun-10	1777	1507	4617	1664	2303	2182	2550
Jul-10	1719	1577	4547	1969	2060	2572	2528
Aug-10	2019	2497	6559	3008	3001	4361	8088
Sep-10	986	1259	3315	1858	1828	1519	2332
Oct-10	512	974	2641	1545	1271	840	1413
Nov-10	186	278	993	360	271	376	364
Dec-10	94	275	743	0	301	232	129
Jan-11	89	414	838	0	395	375	460
Feb-11	99	377	859	133	264	479	n/a
Mar-11	248	667	1729	907	905	817	n/a
Apr-11	1122	1697	3791	2504	2422	1726	n/a
May-11	1301	1427	2959	2212	2135	1770	0

The grand total is 125,165 compared to 97,777 a year earlier, however not all the counters were running throughout that year

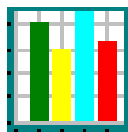
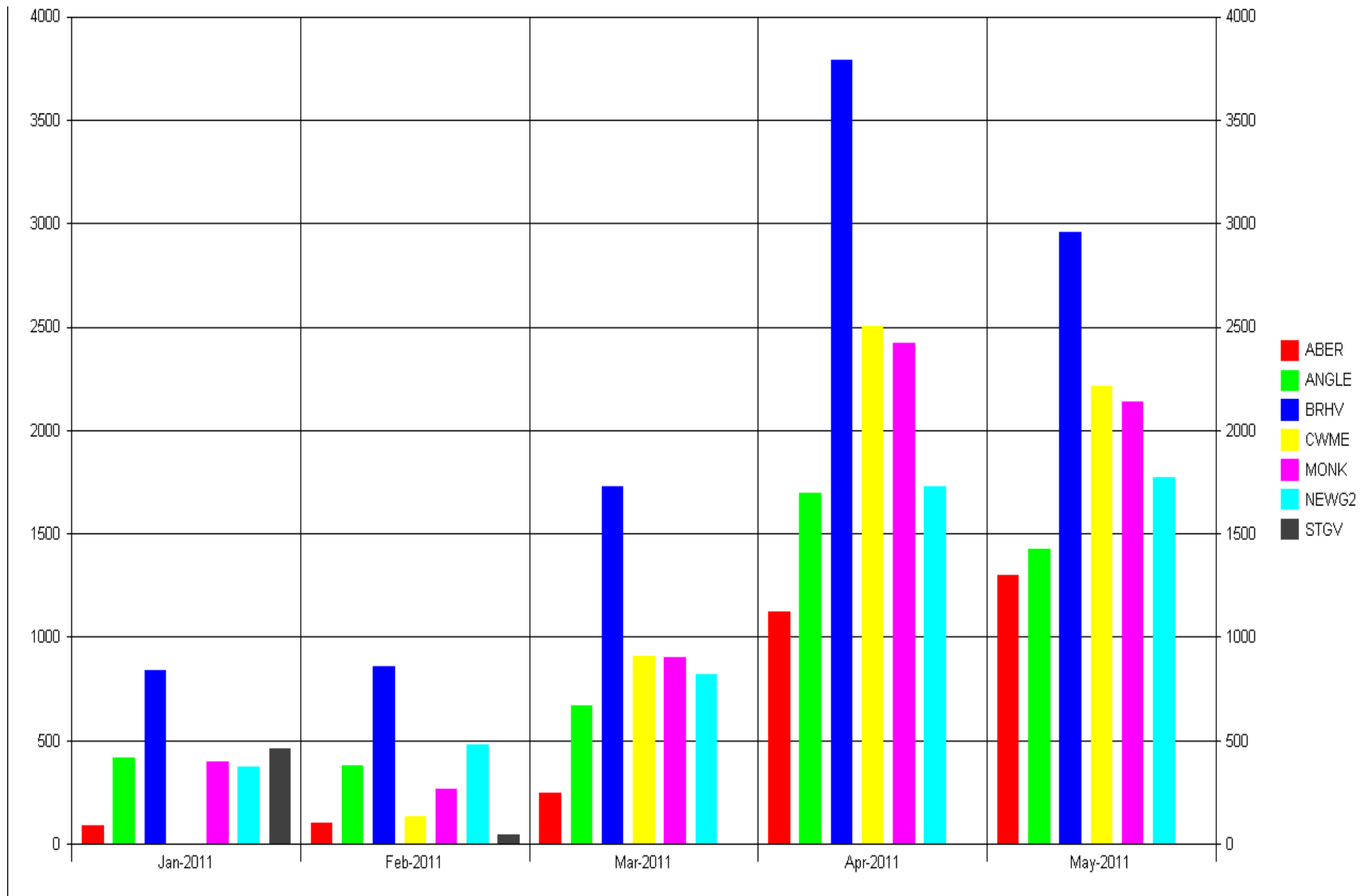


Monthly totals since 2007

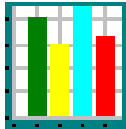
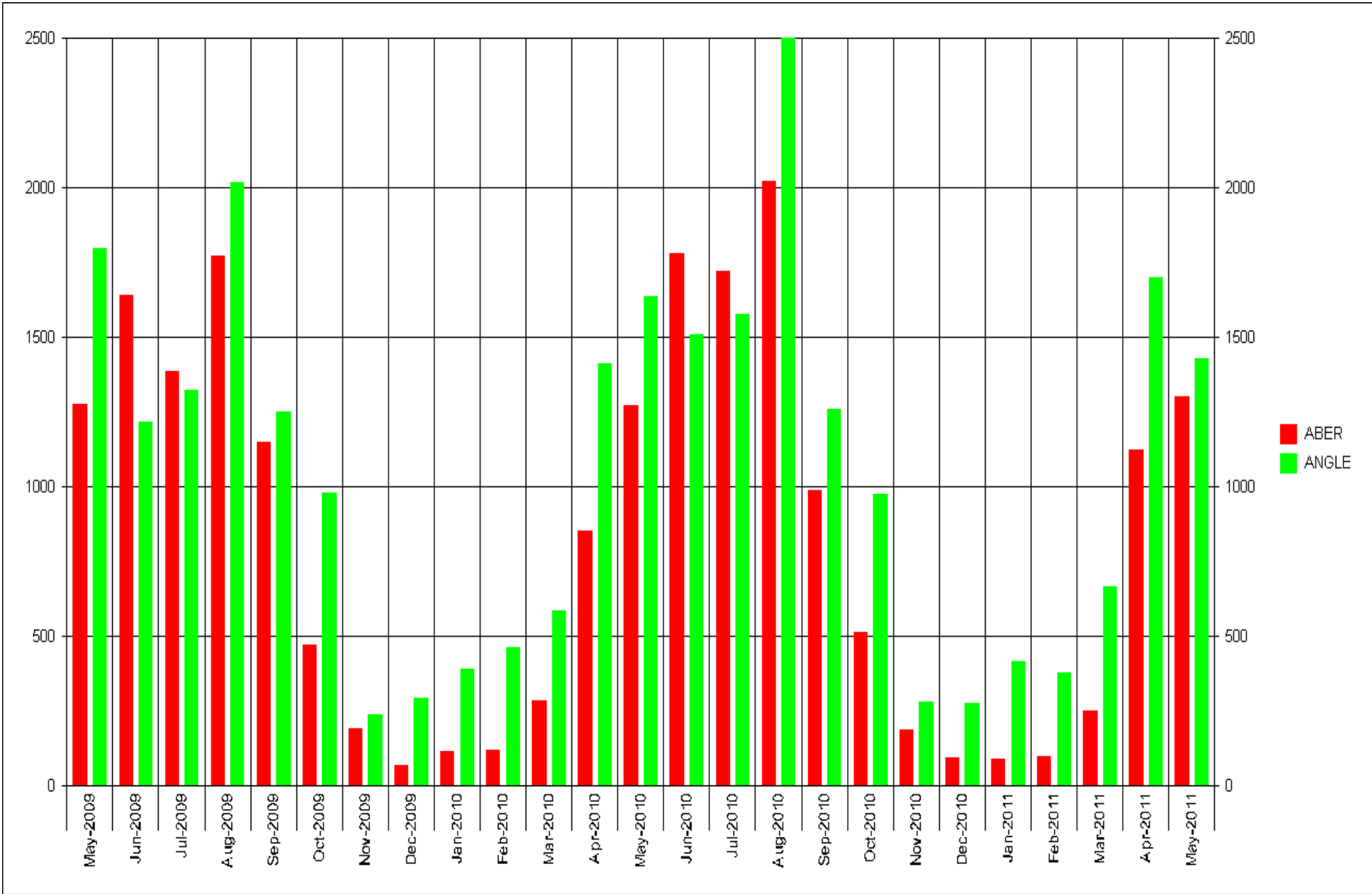
ALL SITES EXCEPT STGV AND NEWG/NEWG2



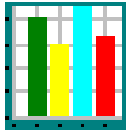
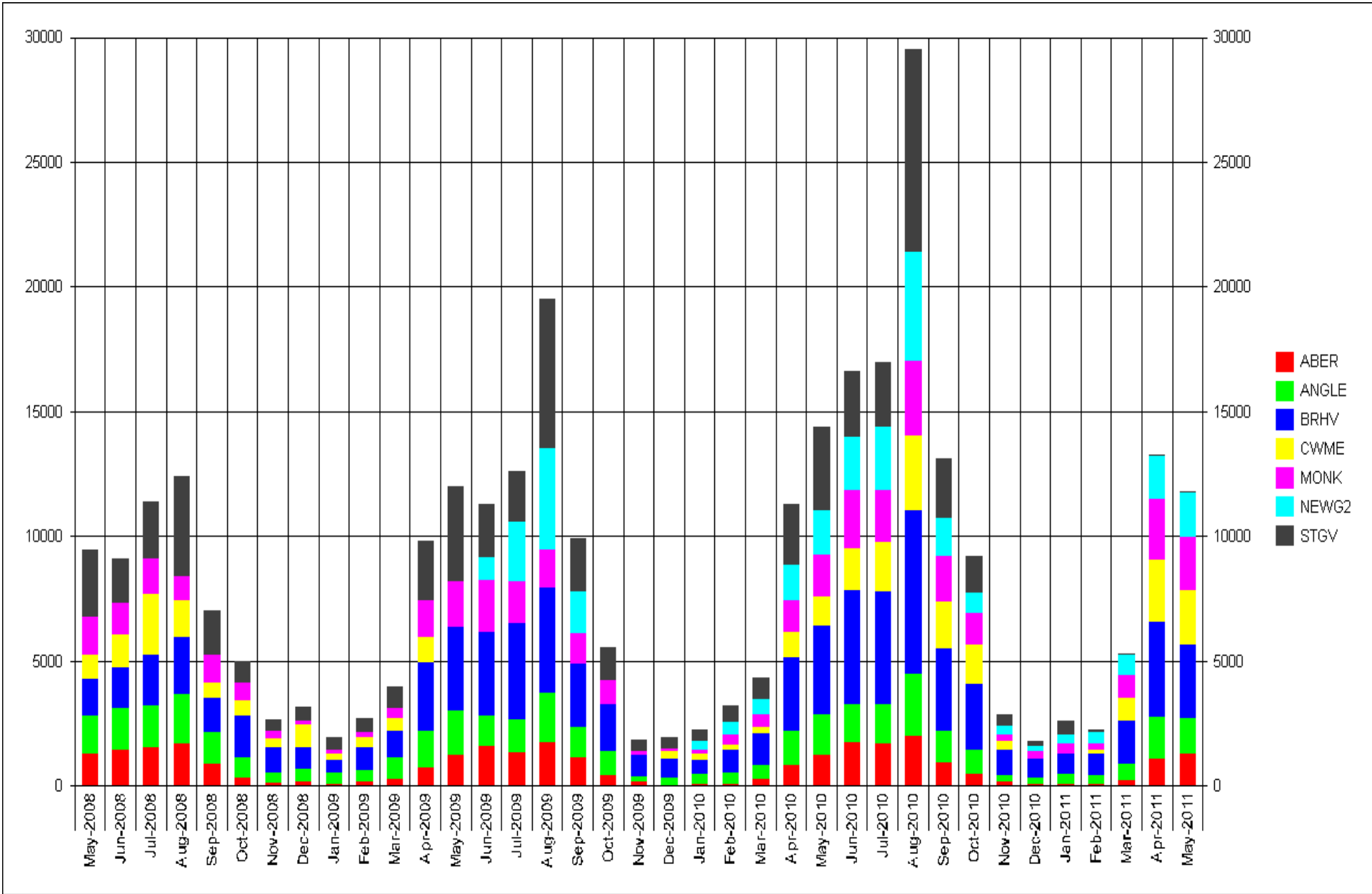
Quarterly trends across the main sites



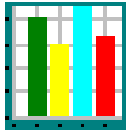
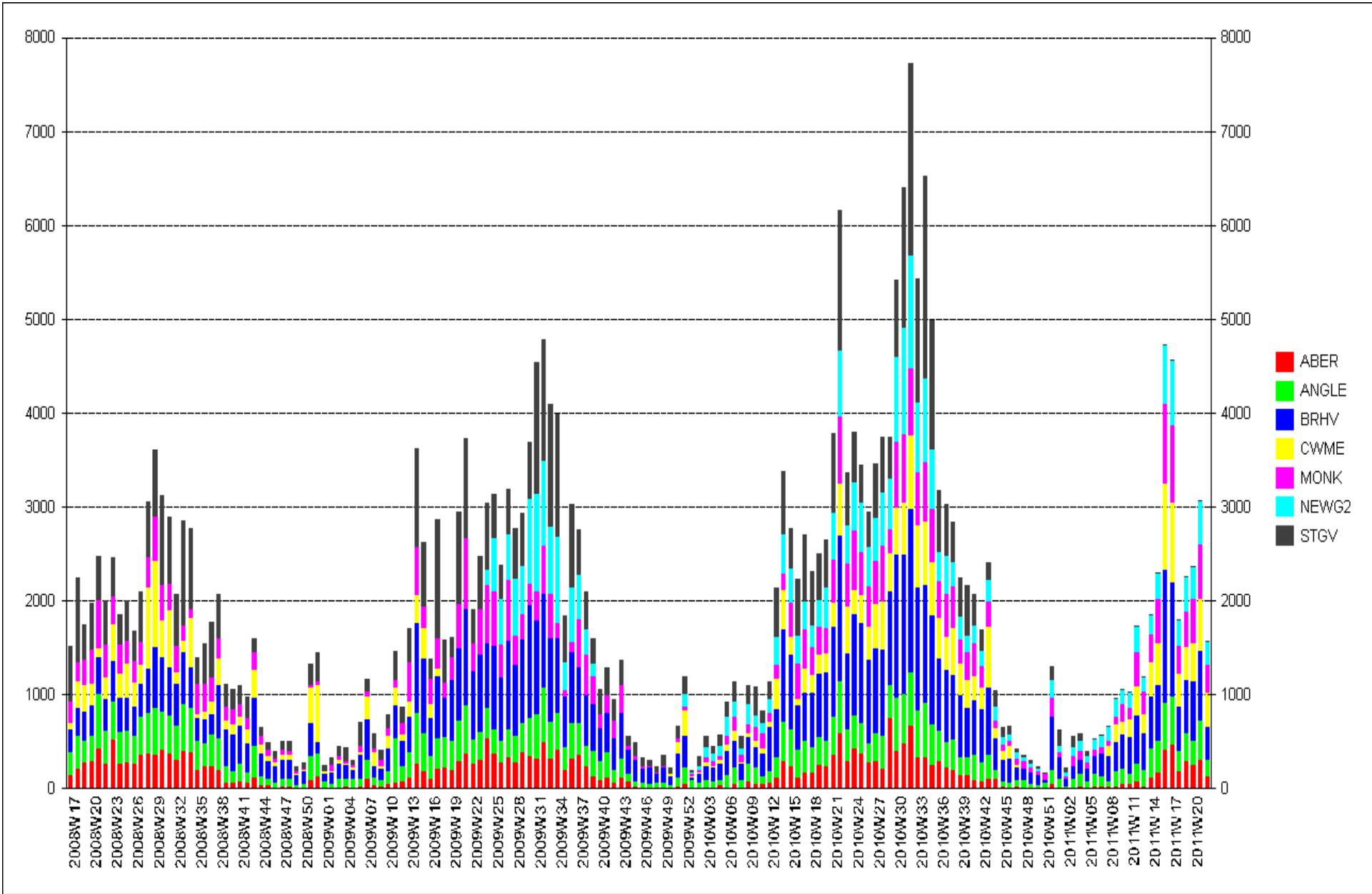
RECENT MONTHLY TOTALS BY SITE (STGV INCOMPLETE)



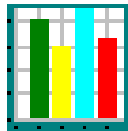
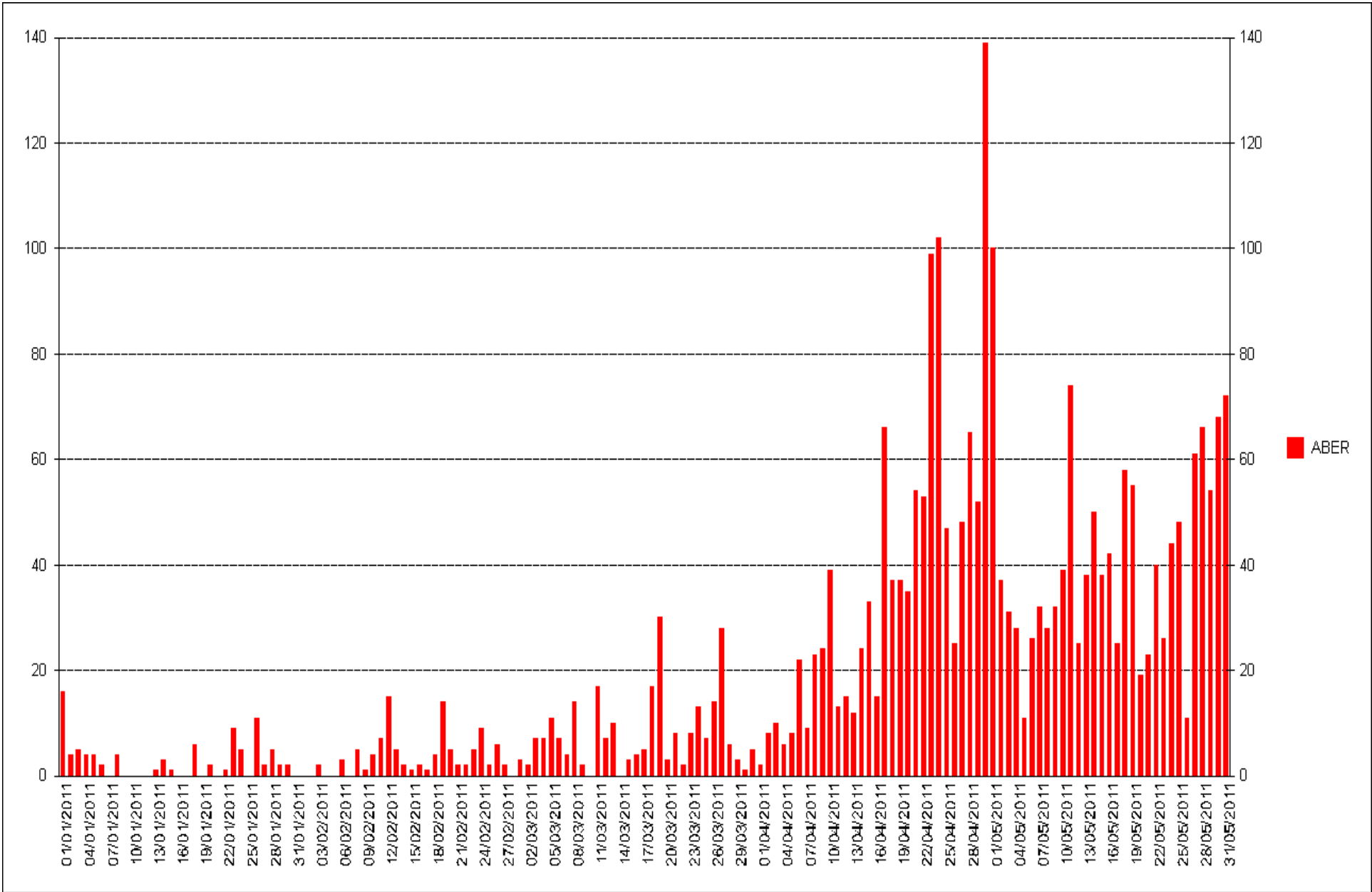
Aberdeiddy and Angle – broadly similar – Angle usually a little busier



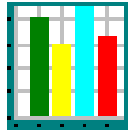
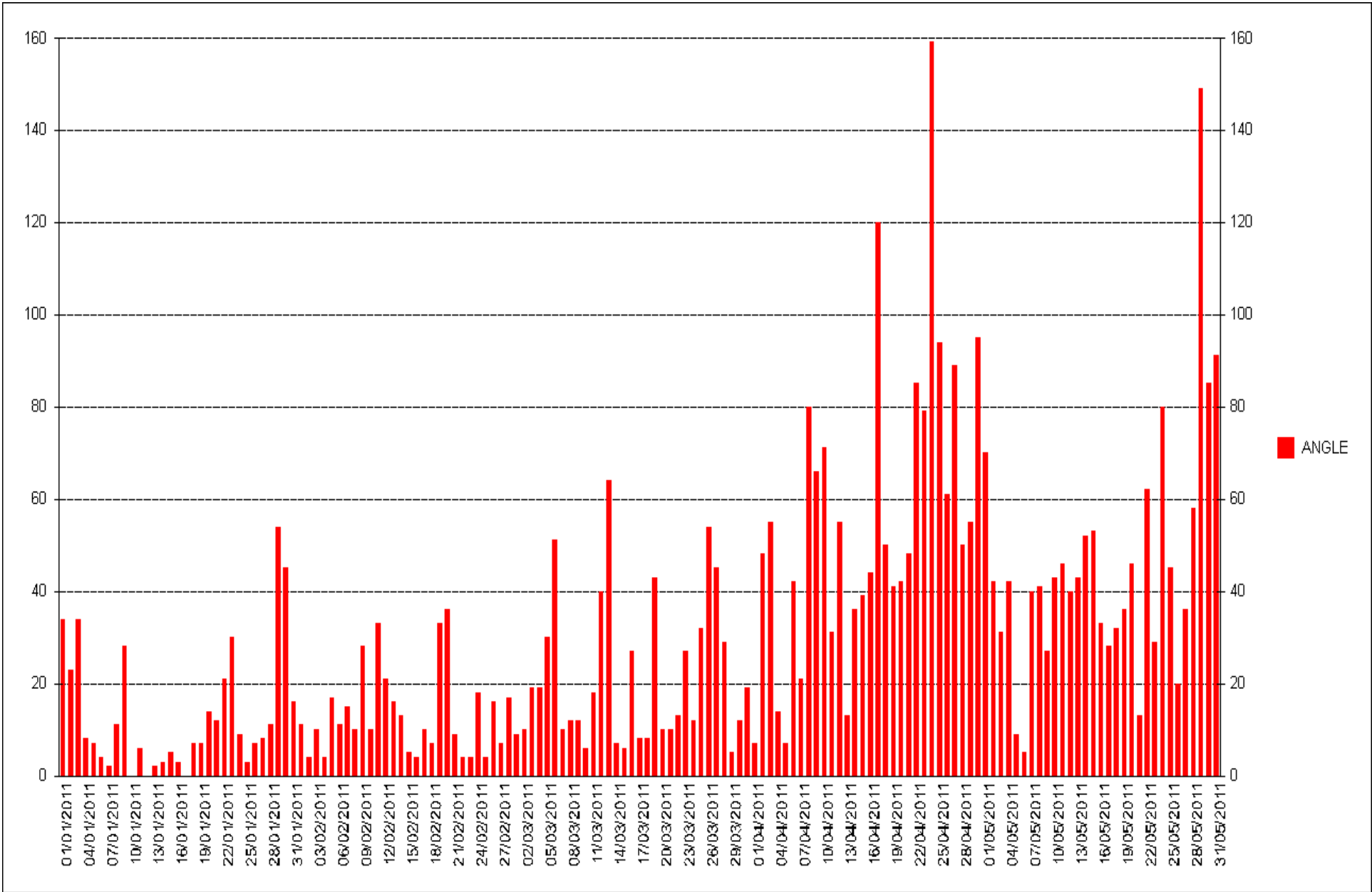
Monthly totals for 3 years



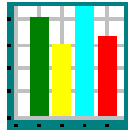
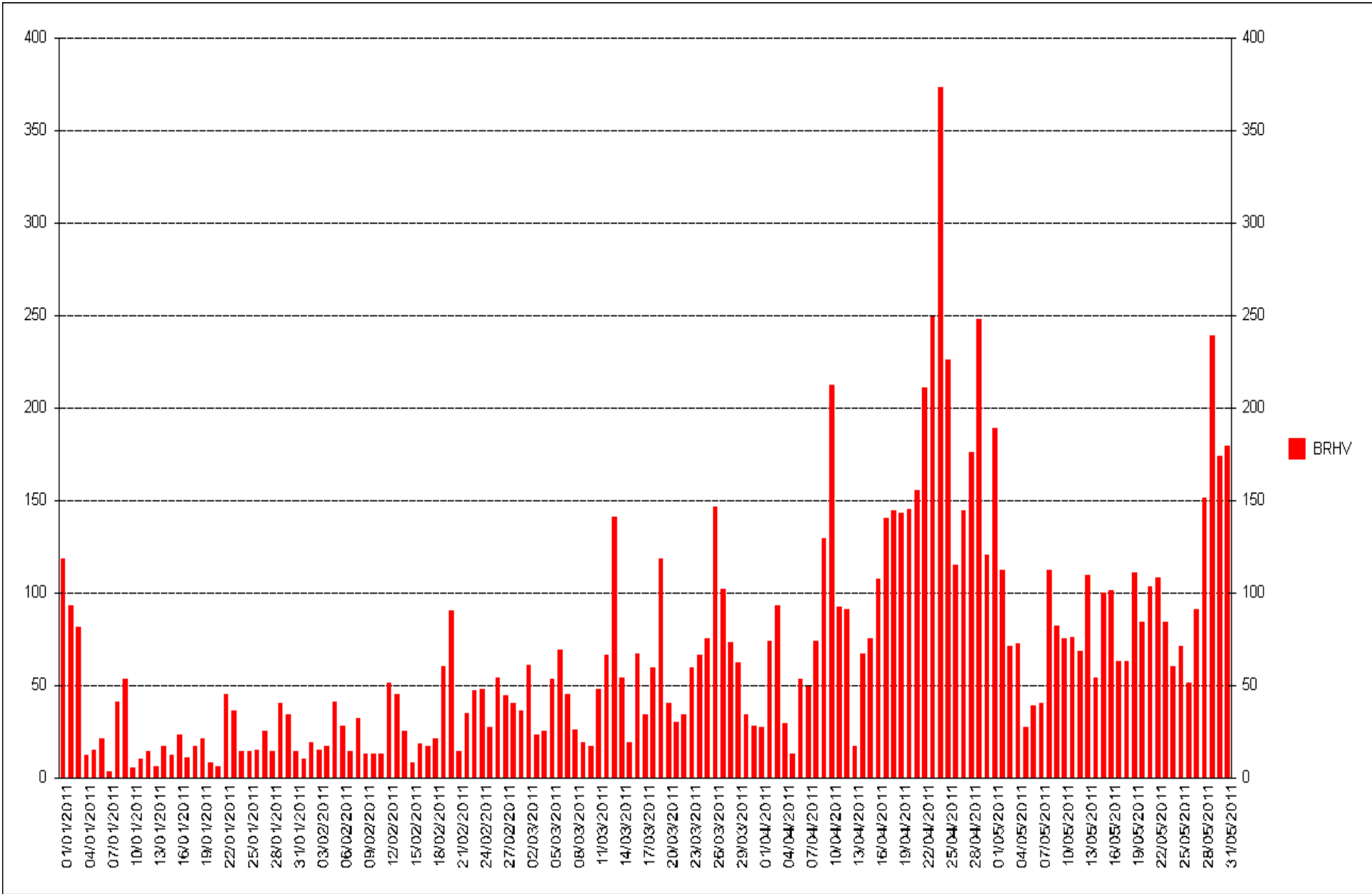
WEEKLY TOTALS (STGV INCOMPLETE)



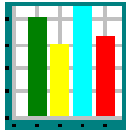
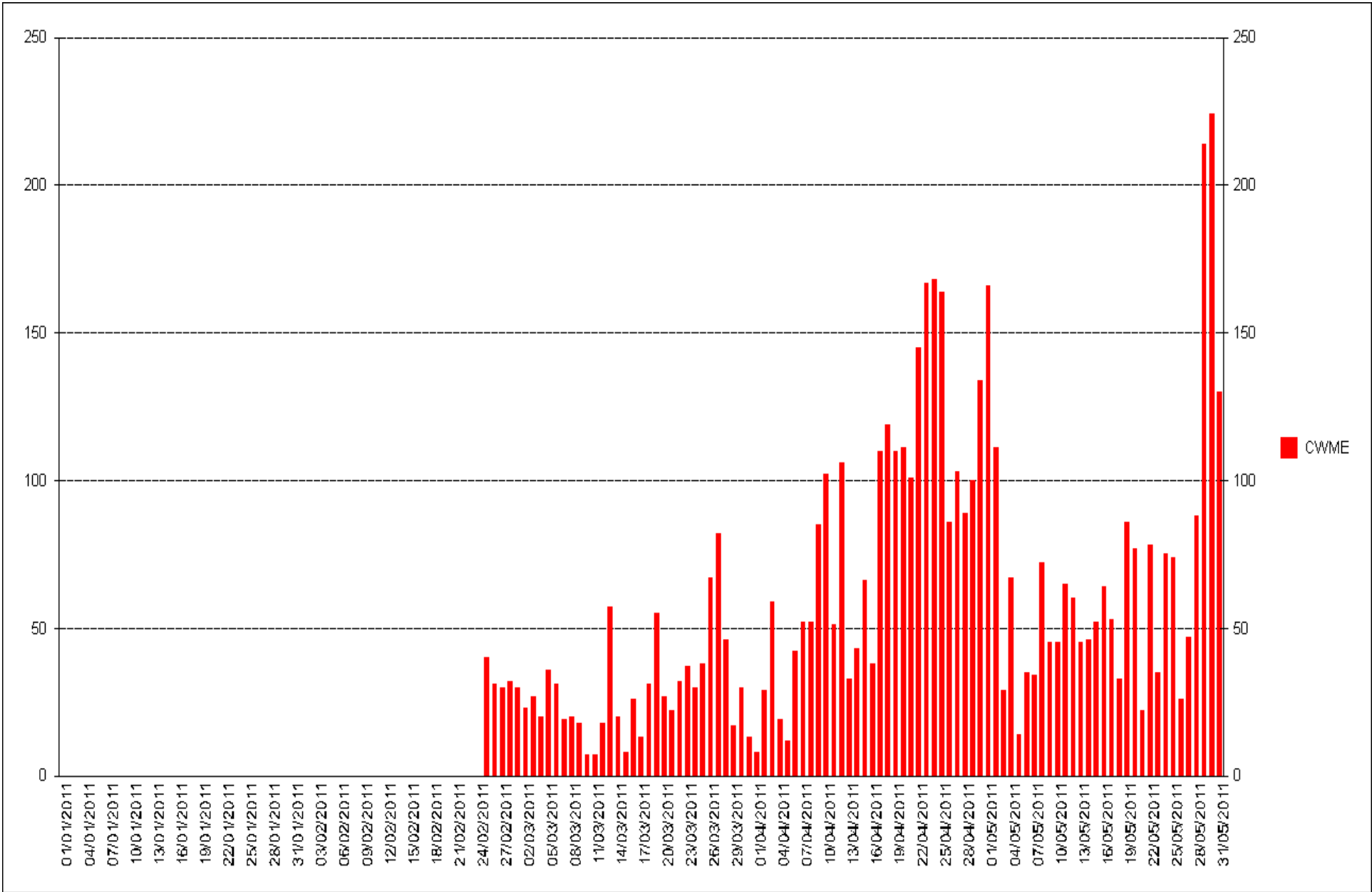
ABEREIDDI



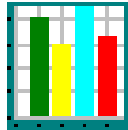
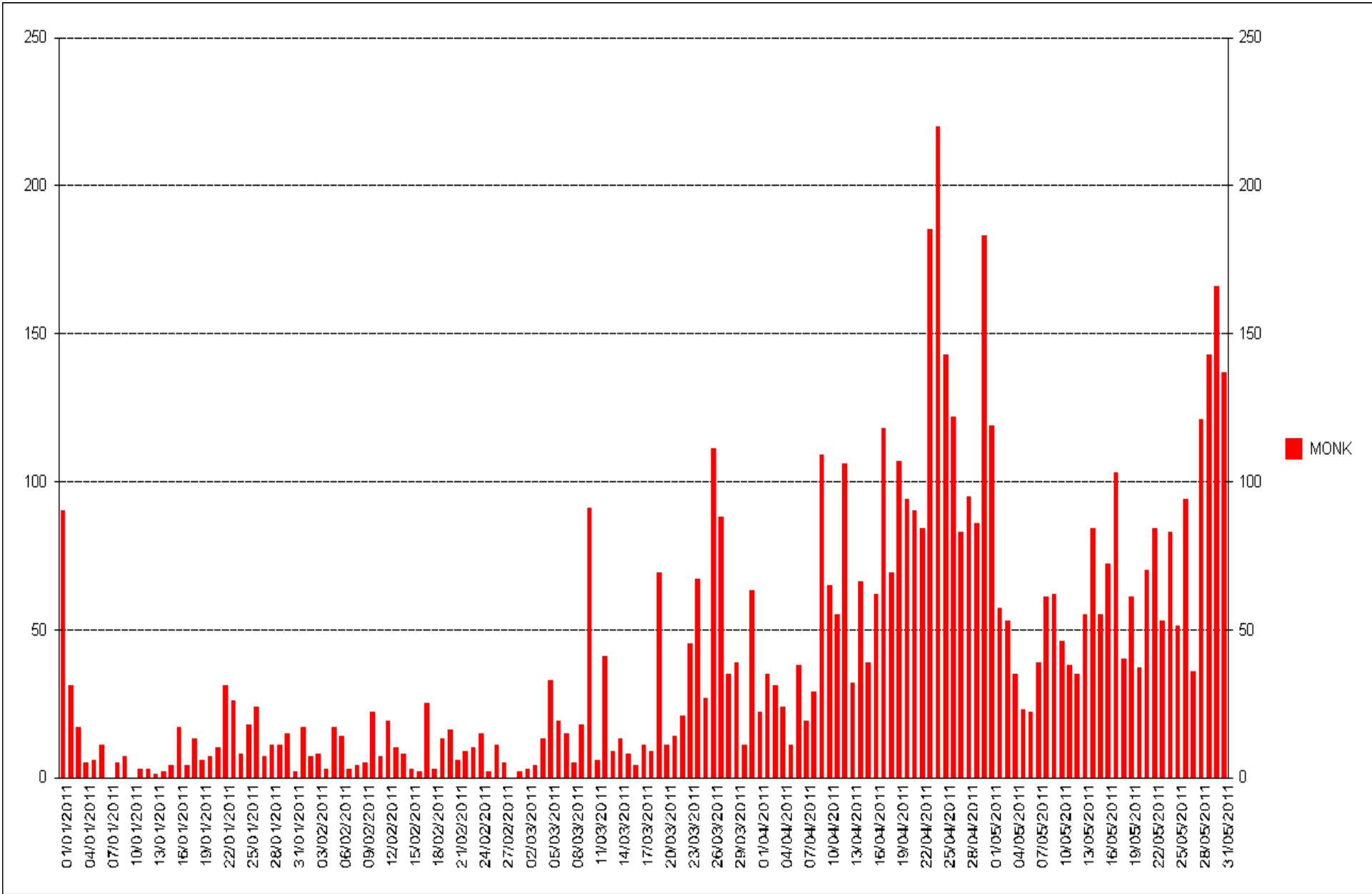
ANGLE



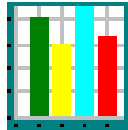
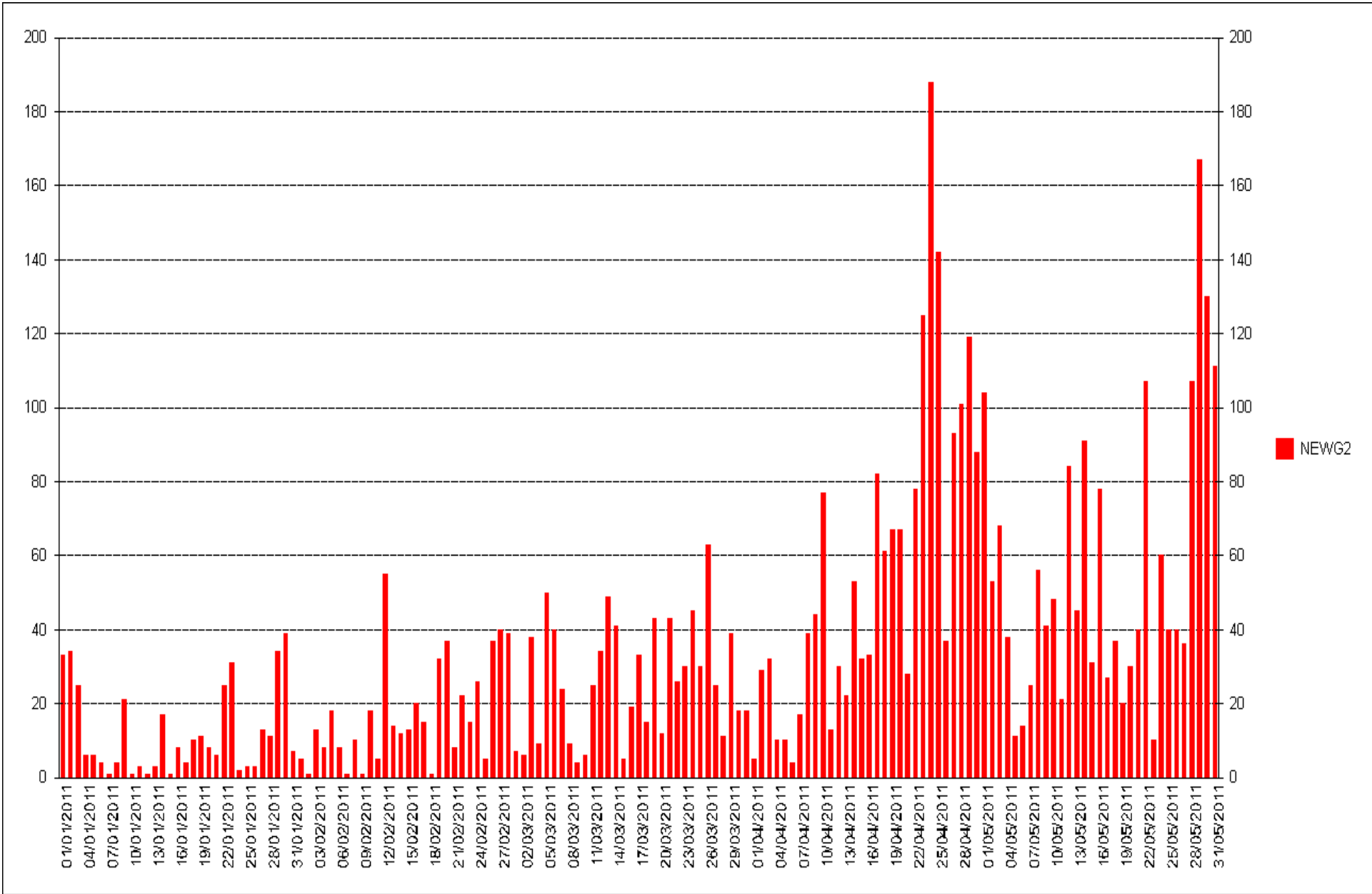
BROADHAVEN



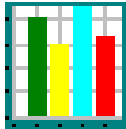
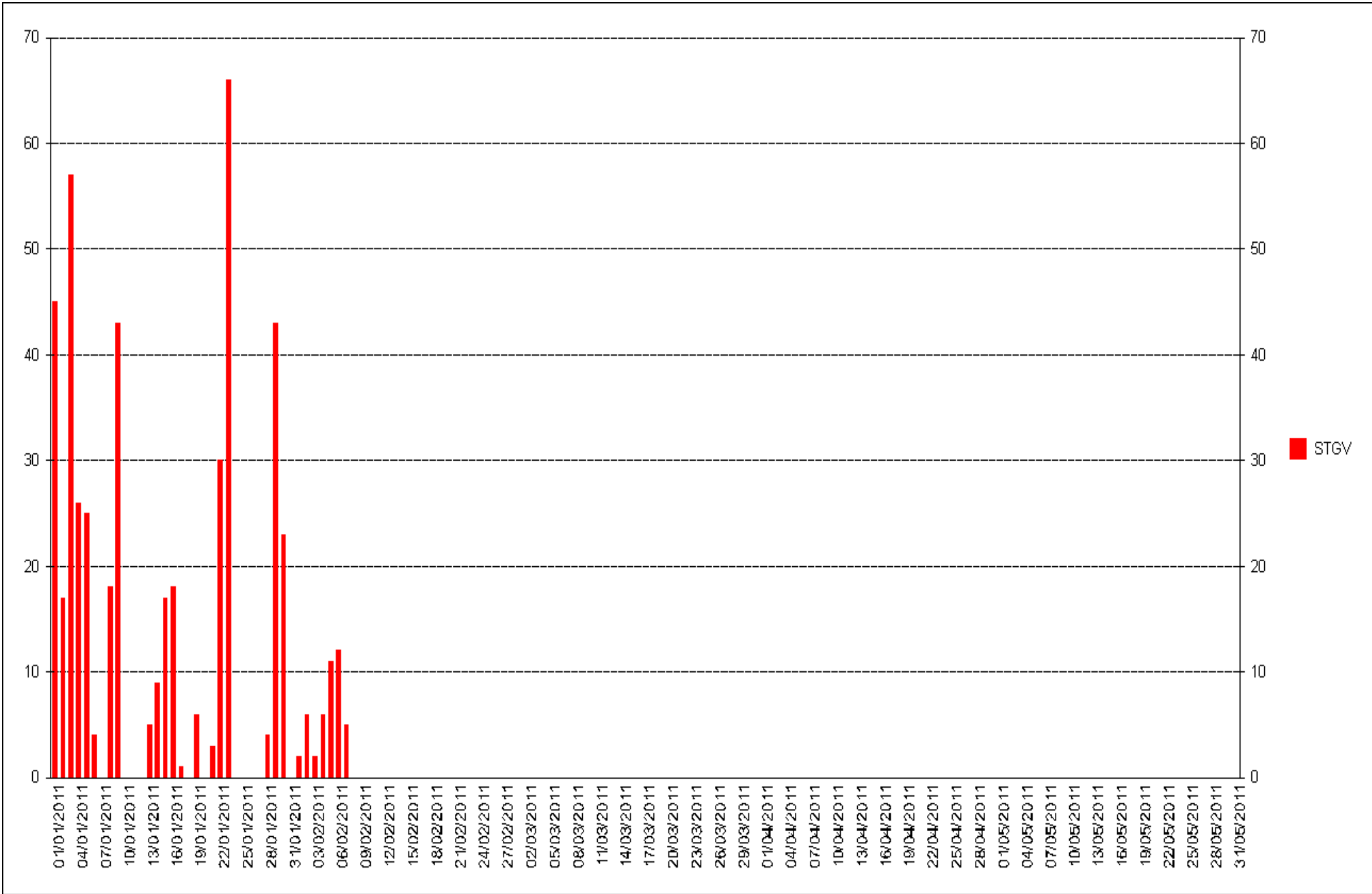
**CWM YR EGLWYS – GATE/SENSOR DAMAGED IN LATE NOVEMBER
 LINETOP INSTALLED A NEW SLAB COUNTER NEARBY IN FEBRUARY**



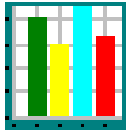
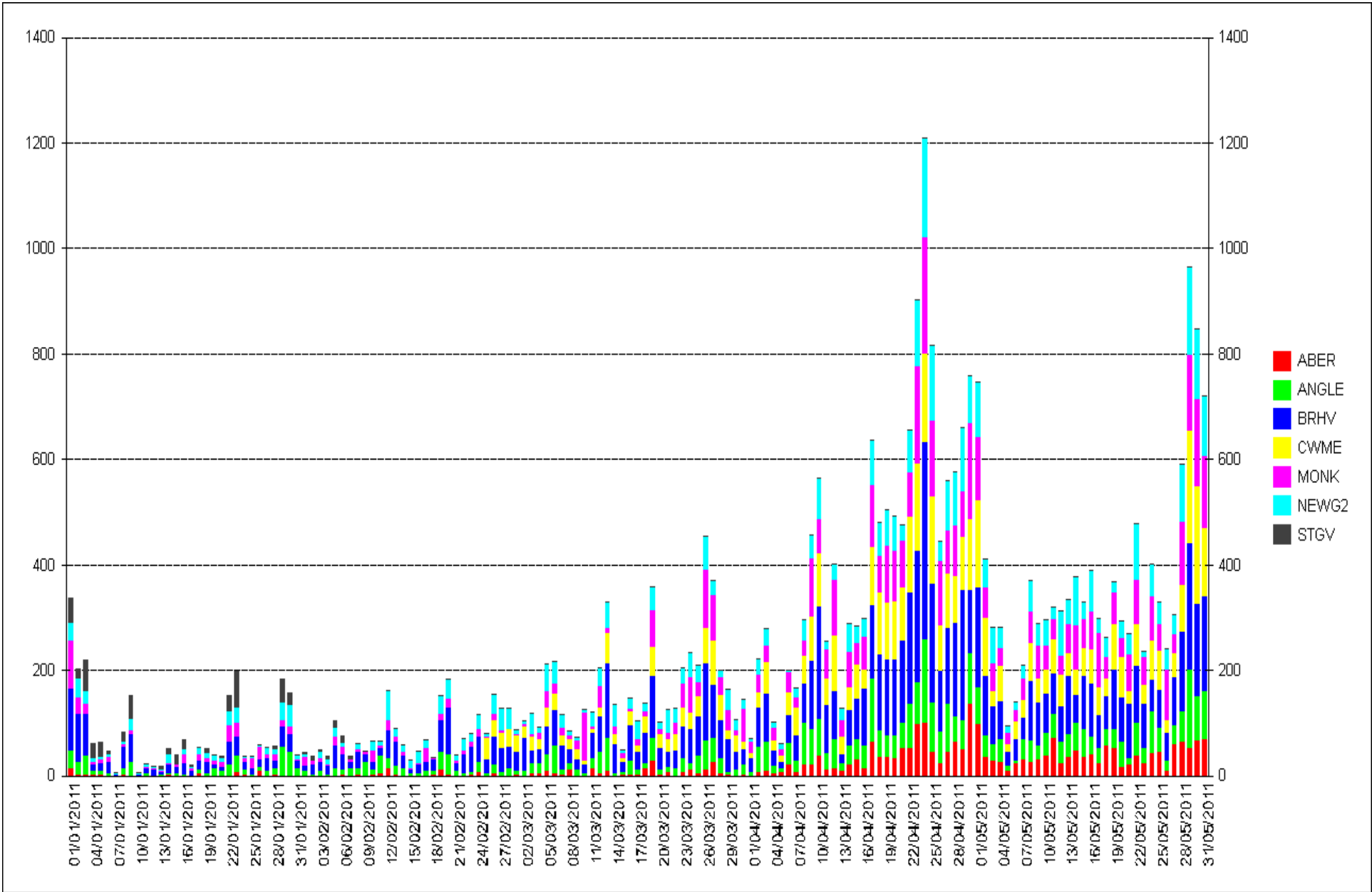
MONKSTONE POINT



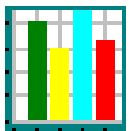
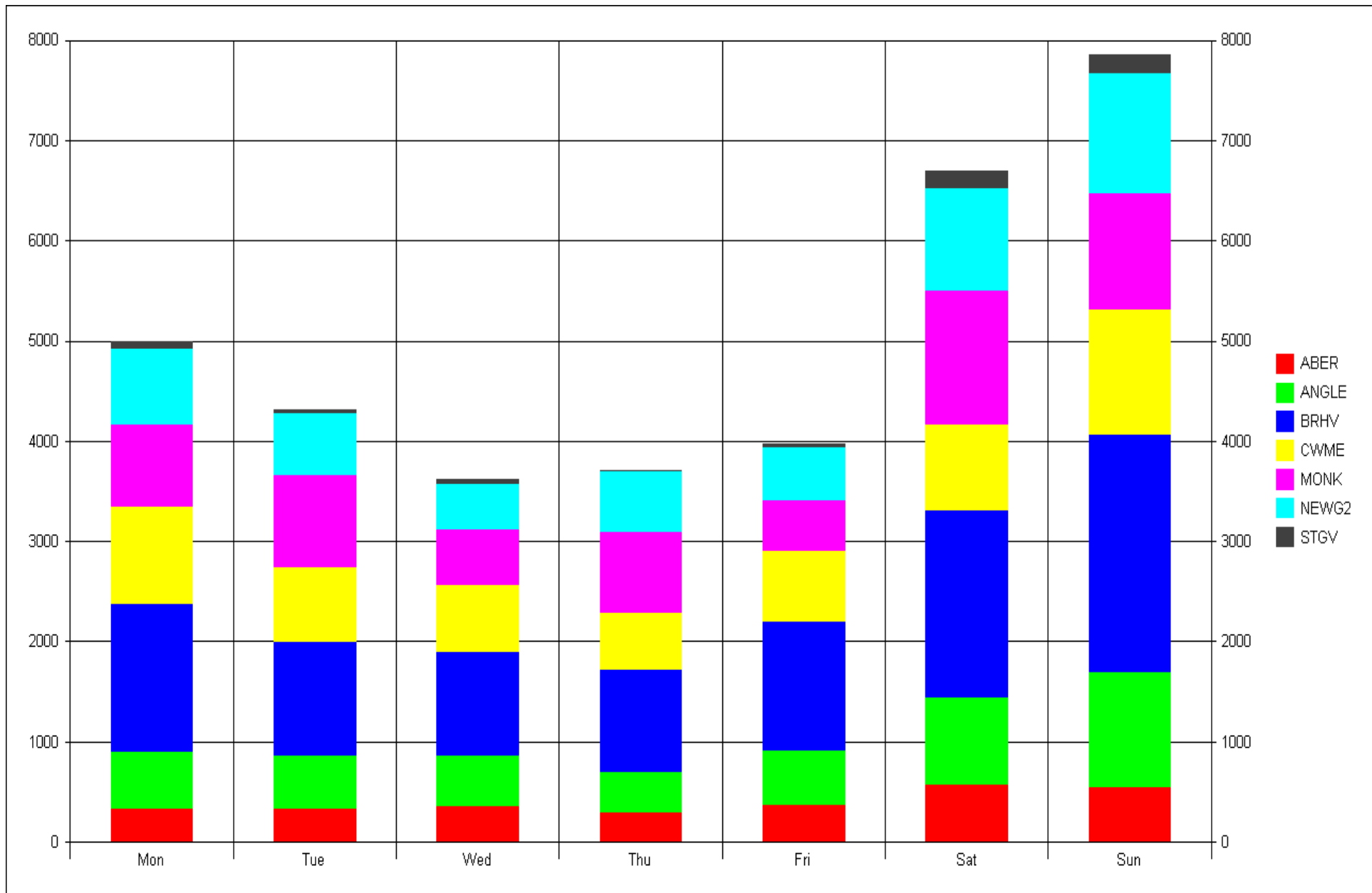
NEWGALE 2



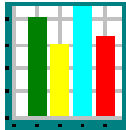
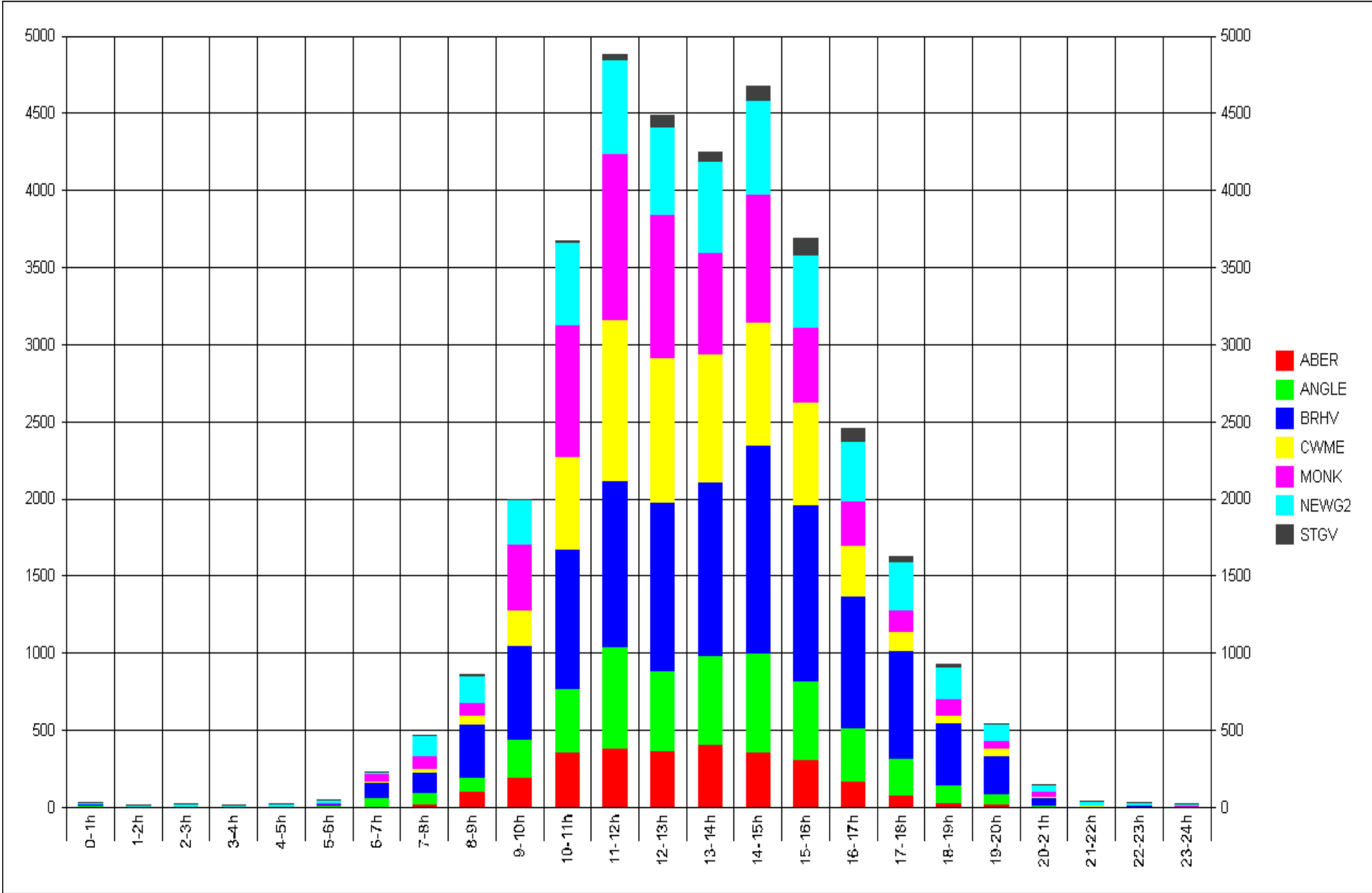
ST GOVANS – DATA NOT COLLECTED – PATH CLOSED



ALL SITES DAILY TOTALS (STGV INCOMPLETE)



ALL SITES JAN-MAY 2011



ALL SITES JAN-MAY 2011

Actions

- The next data collection will be in September 2011 to report on the June-August results